

'Hits' — a drug epidemic on the Belleville horizon
— see Editorial, pg. 1

Mayor tells Women's Club Senior housing denied
— see page 3

Volleyball Buccanettes win first championship
— see Sports, pg. 12

Belleville Times

77 Year, No. 18 An Orchard Publication

Serving Belleville Since 1909

Thursday, November 6, 1986 **35°**

Ten Divisions of Marchers

Veteran's parade commences Sunday

By Christopher Bifani

Ten divisions of grand Veteran's Day marchers will parade south on Washington Avenue this Sunday, and thousands of townsfolk are expected to line the street to witness the spectacle.

The event begins at 9 a.m. starting at the American Legion Post 105 at the north end of Washington Avenue. The parade continues downtown to Town Hall led by the Belleville Fire and Police Departments and the Belleville High School Marching Band.

Also marching in the first division are Grand Marshal Hugh Weiskopf, Grand Marshal Ray Kinsley, and Mayor Michael

Moskowitz, who also serves as co-champion.

Township Assemblyman John Kelly, Commissioners Michael Pizzi, Ralph Dikunigian, Joseph Grande and several other Belleville officials round out the first division.

The Second Division of Veteran's Day parade marchers is led by the U.S. Army band based in Fort Monmouth. The division further includes marchers from American Legion posts, and organizations throughout the county and state. Both Belleville Bands 105 and 209 are represented.

(continued on page 3)

Saved by the beep

Man thwarts car theft but suffers hit & run

A 1985 Chevrolet Monte Carlo was almost stolen from Belleville parking lot this past Saturday, but thanks to a sophisticated auto alarm system the crime was averted.

According to Belleville police Lt. William Adelheim, the attempted car theft occurred in broad daylight at K Mart on Main Street, November 1.

Gerald D. Jeter, 45, of 1 Ford Street, had parked his car in K Mart's lot and was working at his job on Ralph Street. At about 12:45 p.m. Jeter's alarm beeper went off, Adelheim said, indicating that someone was forcing entry into the vehicle.

Jeter ran across the street, where the two suspects saw him coming and began fleeing in a car believed to be a light blue Buick Skylark, which was parked next to Jeter's Monte Carlo.

Jeter goes after the suspects

The light blue car began to pull out when Jeter opened the door to the light blue vehicle to grab the driver. Adelheim told the Times, the driver was described as a medium-built black male wearing a black hat.

At that point the suspect drove his car into Jeter's, pinning the victim in between the two vehicles. Jeter subsequently suffered injuries to the lower left leg and was taken to Clara Maass Medical Center and treated.

According to witnesses who saw the accident, the suspects continued to flee out of K Mart and onto Route 21, regularly called "the escape route" by area police officials.

Lt. Adelheim said Belleville Police are working on some evidence in the case, in conjunction with New Jersey State Police. No arrests have yet been made.

Brought Down by 'Hits'

In other Belleville Police news, Kevin Scott, 21, of Bridge Street, Belleville was arrested for possession of a controlled dangerous substance after he was found collapsed in front of Krauzner's Convenience Store on Belleville Avenue, Sunday, November 2.

The suspect stated he had done "three or three" in an apparent reference to the "hits" drug taking which is rapidly gaining popularity in suburban Essex.

This refers to taking a Codeine pill and a Diversion pill at the same time, producing a high that is being compared to a drunken stupor or one that is similar to heroin, according to various police officials.

Officers noted he appeared to be under the influence. Adelheim said, adding that two more babies in the pills were found on his body when he was searched.

Belleville Detective Vincent Capetta explained that hits are highly addictive and that a tolerance is quickly built up among users. In the early stages of hit addiction, "one-on-one" meaning one codeine pill and one Diversion pill — is enough to produce a sustained high. However, as time goes by the amount needed for the user to get high increases.

In fact, Belleville Police told of one suspect who "busted" that he could handle "five or five."

Unlike the crack epidemic which has exploded throughout the metropolitan area, "hits" are an epidemic which appears to be concentrated in the Newark area.

High Speed Chase on Route 21

When Sgt. John Maiolo observed a vehicle cruising on Route 21 South, Monday night, a high speed chase ensued which ended in Newark and yielded a drug-related arrest.

According to Lt. Adelheim, Maiolo clocked the suspect driving his vehicle at 85 mph and that when he signaled the suspect to pull over he took off instead.

"The suspect was swerving in and out of traffic in an attempt to elude the officer," Adelheim told the Times. "Finally, he pulled over a mile into Newark."

The suspect told police he didn't speak English and was subsequently arrested. He was taken to Deoliveria of Jackson Street, Newark, age 22.

Toy Gun, pills observed on floor

After pulling Deoliveria over, Maiolo observed what appeared to be a gun on the floor of his car. While the gun proved to be a toy, a more thorough search revealed two pills on the floor, which may be "hits."

The suspect was charged with careless driving, possession of a controlled dangerous substance, eluding a police officer, and no registration or insurance.

By Christopher Bifani



Homecoming Queen — Dawn Ricci, a senior at Belleville High school, was this year's Queen for a day during the annual Homecoming Parade sponsored by the Belleville Kiwanis Club. Dawn is an active student at BHS where she serves on the Student Government, belongs to the cheerleading squad and maintains an average on the top fifth of her class. She is also a member of the Key Club, a teen service organization sponsored by the Kiwanis. (Photo by Christopher Bifani)

Town Meeting Notice

The regularly scheduled meeting of the Belleville Board of Commissioners has been changed from Tuesday, November 11 to Monday, November 10, in order to observe Veteran's Day.

The Board meets Monday night at 8 p.m. at Belleville High School.

The Belleville Board of Education announces the following revised schedule of meeting dates for the month of November, 1986. All meetings will be held at the Board Complex, 190 Cortlandt Street, with the exception of the November 24th meeting, which will be held at School No. 1, 30 Passaic Ave.

November 10	7 p.m.	Private Executive Session
November 10	8 p.m.	Public Business Meeting
November 17	7 p.m.	Private Executive Session
November 24	7 p.m.	Private Executive Session
November 24	8 p.m.	Public Business Meeting

Love is blind...

Sightless Belvillite bicycling for charity

By Christopher Bifani

For every hour-up to 24 in a row that Robert Koppelman rides a stationary bicycle, more money will fill the coffers of the New Jersey Association for Blind Athletes.

Koppelman, 28, of Prospect Place, Belleville, is scheduled to begin his workout Saturday, December 5 at 10 a.m., inside Benally's Okinawa Karate School on Belleville Avenue.

Koppelman, who is a black belt at the school, is legally blind. He is also a member of the New Jersey Association for Blind Athletes.

"I'm writing letters to corporations throughout the state, asking them to sponsor me for a certain amount per hour, up to 24 hours," Koppelman told the Times.

He added that any Belvillites wishing to pledge money to his cause could do so by phoning him

at his home, 759-3622, or by phoning the association's headquarters in Montclair at 744-1074.

Joe Ruffalo, President of Belleville Special Olympics, praised his friend Koppelman for his forthright and charitable effort. He also said Koppelman is an accomplished marathon runner, who runs in long endurance races with the help of sighted guide runners.

Thus, the chances of Koppelman saving his sponsors a little pledge money by coming up short of the 24 hour non-stop goal appear to be slim.

Even more slim, if Koppelman's previous fund raising endeavor is any indication.

"Two years ago I rode a bicycle built for two from High Point to Cape May," Koppelman said. The trip was a non-stop success.

Former Town Attorney is new County Executive

Amato takes Essex, wins Belleville 4-1

By Howard Klausner

"Tomorrow, we begin to turn this county around," Nicholas Amato told a cheering audience at the Town and Campus Hotel in West Orange.

We were sandwiched by the Democratic organization," Peter Shapiro told his supporters at the Marriott Hotel at Newark Airport.

Amato, joined in victory by Surrogate elect Earl Harris, was accompanied to the podium for his victory speech by Belleville Times publisher Frank Orchio, and the two men were dressed in an ongoing meeting in the hours before Amato made his victory speech.

Shapiro's defeat was attributed to three causes: a hard drive by the Republicans, a revolt by the Democratic mayors and freeholders, and the 22 percent increase in county taxes.

Shapiro told the press that he believed he might have won, even with the tax increase, if the party leadership had been with him.

Amato spoke in terms of coalition, attributing the victory to Democrats, Republicans and independents alike. "It wasn't a victory for the Republicans. It was a victory for the people."

It was the second time in two years that the voters of Essex County had rejected Shapiro. Last year, he was defeated in his own county by Governor Thomas H. Kean, who is also an Essex County resident, a homeowner in Livingston.

This year, Shapiro won just six municipalities.

He edged Amato in Montclair, East Orange, Irvington, South Orange, Orange and Newark.

The normal Democratic plurality in Newark is usually enough to elect any Democrat. This year, Shapiro received 16,000 votes to 12,600 for Amato. The narrow

ness of his majority sealed his defeat.

Countywide, the unofficial total, before the counting of absentee ballots, was 79,100 for Amato, 65,200 for Shapiro.

Amato, who had been dropped from the Democratic ticket as surrogate, ran with Newark Council President Earl Harris.

Harris outpolled Kenneth Wilson of East Orange, 71,066 to 60,482.

In Montclair, Harris ran ahead of Wilson by 12 votes.

In Caldwell, a Democratic stronghold, Amato won by a 4-to-1 margin, while local Democratic officeholders won re-election handily.

In Republican Essex Fells, Amato won by a 7-to-1 margin.

In Amato's native town of Belleville, the vote was: Amato, 5,738; Shapiro, 1,400; Harris, 4,713; Wilson, 1,566.

Hometown boy

Belleville Commissioner Joseph Grande said, "It's about time Belleville got some representation in the county. Nick is a home town boy, and we're all very proud of him."

In Bloomfield, where Republican Mayor John Kinder tried to stem the tide against Shapiro, heading a Republicans for Shapiro organization, the vote was: 8,089 for Amato, 3,405 for Shapiro.

In Nutley, Amato overwhelmed Shapiro, 5,567 to 2,027.

The total turnout was comparatively light, with some 150,000 voters out of a pool of 621,000 eligibles. But it was strong enough to sweep Amato and Harris into office, and bring an abrupt halt to the political career of Shapiro.

The outpouring of Amato supporters at Town and Campus was

(Continued on page 7)

Commentary

It was an election not of issues, but of image; an election not of vision but of vaguery.

The campaign for Essex County Executive was blatantly designed to win the county tax hike — and even that failed to spur the candidates to detail any real plans for solving the problem.

Blue ribbon panels and wishful state takeovers aside, this election boasted far more rhetoric than reason, and it is unfortunate that it had to come at a time when Essex, the nation's oldest county, is at a crossroads between a return to prosperity and a continued decline.

There were no debates. There were no clearly visible platforms. Around town, to hear the coffee shop experts talk, one would think the Executive race was more like a heavyweight championship boxing match than a contest for the leadership of New Jersey's largest county government.

But although former Belleville Township Attorney and Essex Surrogate Nicholas Amato coasted to an easy victory — without offering a concrete agenda to the multitude of problems this county faces — that agenda still exists.

Crime reduction, a war on drugs, urban renewal, cultural revival, road repair, expanded rail transit, prison overpopulation, and an improved image for the county, much in the way Governor Kean improved the entire state's image. These are the items which will appear on his desk.

We wish Nicholas Amato, Essex County's second Executive, the very best luck and wisdom in the next four years.

The future of our county is in his hands.

— Christopher Bifani

Contents:

Belleville Briefly	2
Editorial	4
Bookmarks	5
Crimereporter	7
Events in the area	8
Social News	9
Sports	11-12
Obituaries	13
Real Estate	14-15
Classified	16-19

BELLEVILLE briefly...

Dr. Nadel to receive bronze plaque

Cerebral Palsy Center awarding annual honors

Special awards will be presented at the Annual Meeting of Cerebral Palsy of Essex and West Hudson on Monday evening, Nov. 17, to persons for their selfless efforts on behalf of the physically disabled children and adults. The center is located at Sanford Avenue in Belleville.

Also honored for outstanding volunteer work and for long term service on the center staff will be Robert Knoblock, Ann Gasior, Bernard Chauvin, Carmella Pecora-Jeanne Thomas. Also to receive certificates of appreciation are two Belleville residents, Ann Boxer and Carol Reiss, for 10 years of employment at the center.

The Belleville Kiwanis, the Livingston Kiwanis and the Thayer Chapter of the Telephone Pioneers of America will receive citations for humanitarian service to the center for contributions and assistance.

Concerned Citizens to meet

Vincent Frantantoni, President of the Concerned Citizens of Belleville, Inc., announces the next general CCB meeting is tonight, November 6, at 8 p.m. Location is the Elks Club at 254 Washington Avenue.

Legal action we may take and we're going to vote to approve our by-laws. Frantantoni said.

New members are welcome, and current members are urged to attend. Tickets for the December CCB Christmas Party will be available at the meeting.

Christmas in Hawaii fashion show Dec. 3

The Belleville High School Home and School Association is presenting a "Christmas in Hawaii" dinner and fashion show December 3 at the Fiesta, Route 17 South, in nearby Wood Ridge.

Fashions will be provided by Mandeep Shop in Irvington and modeled by Belleville High School students.

The high school home and school association urges Bellevillites to "please come join us for a night of fun and fashion—and support your high school."

Tickets cost \$18 each and entire tables may be reserved with the purchase of 10, 11 or 12 tickets.

For tickets or more information call Anna Marie Jerna, association president at 759-7320.



Middle schoolers trek to Sandy Hook marsh

On October 20, ninety students, four parents and five teachers went to Sandy Hook to visit the New Jersey Marine Sciences Consortium. Upon arriving, the group was divided into four sections, each with a guide from the Sandy Hook Field Station.

The program covered marsh and ocean environments. Each group had a separate designation, but everyone got to do all of the activities. A walk through the marsh showed the Belleville visitors why it is an important part of our ecological system. Historically, the marsh was also the area where trains traveled to

take wealthy passengers to Long Branch. Students had a chance to collect assorted samples of marine specimens in the bay.

On the drive to the ocean the guide pointed out Fort Hancock. Some buildings are being refurbished and will be open to the public shortly. Students also got to see the oldest working lighthouse which is a part of the Fort.

A hike along the beach allowed the students to collect shells, and the guides identified the shells found by the students.

Mrs. DiGirolamo, science teacher at the Middle School, organized and made arrangements for the "excellent" field trip.

Bellevillite stars in mystery thriller

Belleville Joseph V. Dowd has been cast in a feature role in the Incandescent Theatre's fall production of Frederick Knott's thriller "Wait Until Dark" to be presented at Thomas Edison JHS, 75 William St., West Orange at 8 p.m. on November 7, 8, 14, 25, 26 and 27.

The play is a mystery thriller which revolves around a young blind woman who accidentally gets involved with killers who are looking for a missing musical doll.

Dowd portrays an ex-con man who, along with two other under world characters, will go to any length to find the doll.

Dowd has appeared in several other Incandescent Theatre productions and with the Studio Playhouse in Montclair. When not on stage, Joseph Dowd is a data processing consultant.

Ticket prices for "Wait Until Dark" are \$7, \$5 for seniors and students. Group rates are available. For more information and reservations call 736-5475.

Troise Insurance Agency INSURANCE POOR ?

Many Discounts Available
Truck Auto Life Homeowners
Tenant Insurance
Free Computerized Quote
Personalized Service
759-4100

Monday thru Friday 9 a.m. - 6 p.m.
Saturdays 9 a.m. to 12 noon
172 WASHINGTON AV. BELLEVILLE



M & K CAB 35 Franklin Ave. Nutley

\$2.50 Local Rate
Flat Rates Out Of Town

CALL 661-4000
Open 7 Days
Prompt & Courteous Service

Assemblyman Kelly is guest of honor

Belleville Chamber of Commerce to host 22nd annual dinner dance

On Saturday, Nov. 22, the Belleville Chamber of Commerce will be holding their "gala social event of the 1986 year."

Guests are cordially invited to attend the 22nd Annual Dinner Dance to be held at the Branch Brook Manor Restaurant, 13 Washington Avenue, Belleville.

Shirley Sherman, chamber president said "We hope you will mark this date on your calendar and

plan to spend a most enjoyable evening with us."

Tickets are \$40 per person and will be issued on a first come, first serve basis, as a limited number are available.

This year the Chamber will be honoring Assemblyman John V. Kelly who has been active for many years, and community and charitable affairs and is the elected representative of the 30th

legislative district in the New Jersey General Assembly, which includes Belleville.

John Kelly, a 22 year resident of the district, is serving his second term in the State Legislature. He was first elected in 1981. He is also president of Nutley Savings and Loan Association.

Cocktail hour will begin at 7 p.m. Dinner will be served at 8 p.m. and will include dancing, door prizes and a few surprises along the way.

Entertainment will be provided during the entire evening along with an open bar.

For tickets call the Chamber at 759-4848.

1885 1986



IT'S HOLIDAY CLUB TIME

EXQUISITE FRENCH CRYSTAL
CANDY CONTAINERS ARE YOURS —
PLUS GENEROUS DIVIDENDS TOO!

Add a distinctive touch of elegance to your Holiday decor with this exquisite French crystal candy container. This lustrous gift will be equally at home as a confectionary container, as an hors d'oeuvres receptacle, in the boudoir as a jewelry or treasure cache, or in the office as a calling card holder.

This octagonally-shaped container comes in a colorful, heavy duty protective holiday package suitable for a gift of the season. It is a present of exquisite taste and usefulness.

First DeWitt sweetens the season by paying generous dividends on completed clubs. Members opening \$5, \$10, or \$20 clubs will receive one gift per customer. Come early while the supply lasts.

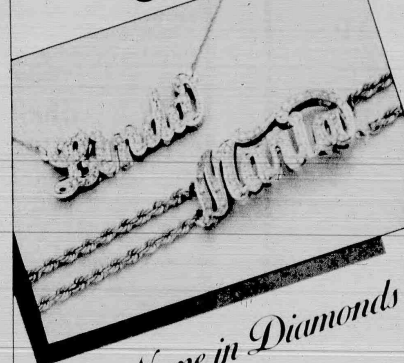
FIRST DeWITT SAVINGS AND LOAN ASSOCIATION

BELLEVILLE • BLOOMFIELD • CEDAR GROVE • HOPATCONG
WEST CALDWELL • BRICKTOWN • PARSIPPANY



TELEPHONE 751-2800 ALL OFFICES

Affordably Corbo



Her Name in Diamonds
Sale priced \$499 from

Corbo knows the perfect gift for every woman, her name "in lights." Glittering, dazzling diamonds spell out each letter in our fine quality double-tier 14K gold and diamond jewelry. Now it's more affordable than ever. Allow 3 weeks for delivery.

Shown: 18" necklace: 1/4 ct. \$499, 1/2 ct. \$799. Double chain bracelet: 1/4 ct. \$699, 1/2 ct. \$999. Prices are for 5-letter name. Others may vary.

Corbo Jewelers
The Corbo family
a tradition in fine jewelry

Make holiday shopping simpler. Open a Corbo Charge Account now.

Bloomfield: 586 Bloomfield Ave. • Clifton: 1055 Bloomfield Ave.
Bergen County: Paramus • Rockaway Town Square Mall, Rockaway
Ocean County Mall, Toms River • Seaview Square Mall, Ocean
Rutherford: 58 Park Ave.
Also in Hackensack and Valley Stream, New York.

Ritacco Bros. Pizzeria

\$1.00 off
Any Pizza
pick up only 1/4 coupon

18 Washington Ave.
Nutley
667-9600

Pharmacy Footnotes



Vincent
Cozzarelli
Reg. Ph.

VAPORIZERS

The vaporizer is an excellent aid when congested, impedes breathing. It is a mechanical device that provides excellent relief. If properly used it is very much like a pressure-operated tea kettle, in that it is placed in the proper chamber, the chamber sealed and the unit plugged into an electrical outlet. As water inside the unit heats the liquids to a point where they boil and form into vapor. This vapor is inhaled with the required medication and can be inhaled directly. When purchasing such a unit, make sure that it is a type approved by the Underwriters Laboratories.

The line green stick on label identifies it as such.

We provide you with a complete selection of over-the-counter aids, health needs, cosmetics and toiletries at ROSSMORE, 1386 Broadway • 1386 Broadway • AVE. 759-1936, 759-1968. Our complete prescription department includes free delivery service. Cameras and film, a gift department and greeting cards are available. Hours: Monday 8 a.m. to 10 p.m., Sunday 9 a.m. to 6 p.m.

HANDY HINT:
In an emergency, use the steam of a shower to promote decongestion.

Parade...

(continued from page 1)

in this division.

The 3rd Division is led by the U.S. Coast Guard Color Guard and the New York Transit Emerald Society Band. Belleville Italian American Post 7 and Belleville Amvets Post 26 are marching in this division as well.

The 4th and 5th Divisions will include National Guard Color Guard representation, as well as VFW marchers from Belleville Post 275 and other posts in the area. Also, Knights of Columbus and Elks Club marchers will parade in these divisions.

The 6th Division features the Shriners' contribution to the parade — clowns, a band, and a motor corps.

Belleville Girls Scouts and Brownies will march in the 7th Division, along with the Nutley Savings Bank, the Lane Riders Motorcycle Corp., and a high school band from New York.

The 9th Division features the Orange High School Band, the Nutley Auxiliary Police Color Guard, the Belleville Boy Scouts and Cub Scouts, and the Nutley Amvets Twirlers.

Concluding the parade, in the 10th Division, will be the Essex County Sons of the Shellegh band, Essex County Sheriff's Department marchers and the Sheriff of Essex, Thomas D'Allesio.



Hawaii fever? — Belleville Women's Club hosted an annual luncheon at the Lewistown Presbyterian Church October 31, this year with a Hawaiian theme — eight down to hula and tropical attire — many ladies supported and Hawaiian chicken main dish. Next month, Belleville society goes "Hawaiian" again — at the BHS Home and School Association's dinner fashion show, December 3. Theme of that event is "Christmas in Hawaii." (Photo by Christopher Bifano)

Belleville high school in computer contest

Berg Akari, Scott Odorizzi, Elizabeth Petrait, and Kathy Popowich, students enrolled in the high school Computer Basic I course, will be competing against students from New York, Rhode Island, New Jersey, and Pennsylvania in a computer contest sponsored by the American Computer

Science League. The contest runs from November of 1986 to February of 1987.

Under the coaching of Miss Josephine Bono, the students will learn computer topics beyond the

class lessons so that they will be competitive. Awards for achievement and/or participation will be given to the students at the annual Raymond Smith Scholastic Awards Dinner.



I've got some good news and some bad news. — The good news, Mayor Michael Marotti told the Belleville Women's Club, is that the Senior Citizens Recreation Clubhouse is being expanded — from about a 300 capacity to a 500 capacity. The bad news is that Belleville's grant application for federally funded senior citizen housing fell through. The township will not be building a home for senior citizens next year. To better the townships chances for being picked out of many to receive the scarce funding, the Board of Commissioners had hired a grant application consultant, unfortunately to no avail. (Photo by Christopher Bifano)

Public school menu

High and Middle Schools

Monday, Nov. 10: Eggplant parmesan, onion kaiser roll, cheese steak, on roll, Italian hot dog, french fries, garden peas, vanilla pudding, milk, sub base, combo ham & cheese.

Tuesday, Nov. 11: Veal piccata, in roll, chicken nuggets, french bread, pizza, french fries, applesauce, milk, sub base, combo assorted cold cuts.

Wednesday, Nov. 12: Breakfast for Lunch, scrambled eggs, sausage links, bacon, pancakes, hash brown, patties, spicy applesauce, milk, sub base, pepperoni & provolone.

White, chocolate and skim milk also available. Menu is subject to change.

Elementary Schools

Monday, Nov. 10: Breaded beef steaks, baked fruit juice, bread & margarine, 2 cookies, milk, hot dog, tater barrels, fruit juice, hot dog roll, two cookies, milk.

Wednesday, Nov. 12: Spaghetti w. meatballs, green beans, bread & margarine, doughnut, milk, or toasted cheese sandwich, green beans, fruit juice, doughnut, milk.

The cost of hot lunch is \$4.75 per week based on a five day week. Lunch money is collected on Thursdays for following week. Please notify the school office if child is absent. Parent or guardian is responsible of sending the money to school.

For further information call Linda McGhee, food service director at 450-3477.

J.P.'s CLEANERS

Coming soon in our Brand New Store...

Same Location...

**543 Washington Avenue
Belleville, N.J.
759-5728**

**Watch for our GRAND OPENING
on or about Nov. 15th**

BE HEALTHY - STAY HEALTHY

A Chiropractic examination
will show you the way!

Dr. Susan M. Guarino, Chiropractor

has been serving the Belleville, Nutley, Bloomfield area for years and is available for consultation in discussing the benefits of chiropractic.

PLEASE CALL!

**Bloomfield
Chiropractic Center**

858 Joralemon St.
Belleville, N.J. 07109
759-3600

"Your Health Is Our Concern"



Ricky "The Dragon" Steamboat

IN PERSON
1 PM to 3 PM Sunday - Nov. 9th



Photo by Steve Taylor

Belleville Tobacco

386 Main St., Belleville 759-9803

(in the Grand Union Shopping Center)

Now in stock... a full line of U.N. TOYS LTD. Thundercats, wrestling figures and managers, Ricky Steamboat Headbands.

16" Hulk Hogan Doll \$19.95

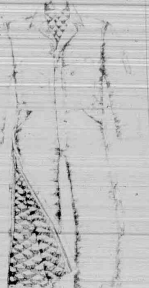
Specials... Wrestling figures... Hogan, Hillbilly, Andrea, Shiek, Volkoff, Pipen & Stud... \$5.75

Carhartt

**Brown Duck Insulated
Coverall with Leg Zipper**

Built better than it has to be.

- Heavy duty 100% cotton duck
- Water repellent
- Wind resistant and snag proof
- Red nylon lining quilted to polyester
- Extra strong, triple-stitched main seams
- Thread bar tacks at stress points
- Heavy duty two way zipper front
- Heavy duty two way leg zipper to waist for easy on and off
- Bi-swing action back
- Two front zip chest pockets
- Corduroy collar
- Optional Matching lined strap hood \$9.95



\$73.95

Rugged as the men who wear them.

ATLANTIC UNIFORM

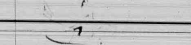
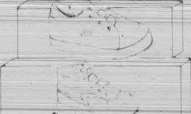
444 Washington Ave., Belleville • 751-1242

Open 9 a.m. - 5:30 p.m. Mon & Fri 10:30 a.m. - 7:30 p.m.

VETERANS' DAY

Sale

20% off All Childrens' Sneakers
3 Days Only - Nov. 8th, 10th, 11th



KEDS

KEDS

Plaza Bootery

Where the shoe is always guaranteed

183 Franklin Ave. • Nutley, N.J. 607-8904

SHOE REPAIR DONE ON PREMISES

FREE PARKING — MAJOR CREDIT CARDS HONORED

Plaza men's store

**5 DAY
VETERANS' DAY
SALE**

Thursday thru Tuesday,
Nov. 6 thru 11

All Wool Imported
English Tweed Sport Coats

Reg \$165 Now \$129⁰⁰

Imported Camel Hair
& Wool Sport Coats

Reg \$235-\$250 Now \$199⁰⁰

**Sansabelt Slacks
15% OFF**



363 Franklin Ave.
Belleville 759-0019

(Channel Shopping Center)

FREE PARKING

Hours: Mon & Fri 9:30 a.m. - 6 p.m. Tues, Wed, Sat 9:30 a.m. - 6 p.m.



Belleville Times

Serving Belleville Since 1909

(1 SPS 049-220)

Published Every Thursday
At 155A Washington Ave.
Belleville, N.J. 07109

Annual Subscription \$14.00
Senior Citizens \$7.00

Second-Class Postage Paid

At Newark, N.J.

Postmaster: Send address
changes to The Belleville Times,
155A Washington Ave., Belleville, N.J. 07109

Frank A. Orechio, *Publisher*Christopher Bilani, *Editor*Helen Maguire, *social editor*Michael Lambert, *sports editor*Jaye Tarantino, *advertising rep.*

To report news and other items

of interest, call:

759-3200

Hits

Long before the crack epidemic erupted throughout the metropolitan area, Essex County Sheriff Thomas D'Alessio spoke of another drug epidemic, concentrated in Newark, called "hits."

"Hits" refers to the potent combination of the drugs Codeine and Dordian, which taken together produce a high that has been described as heroin-like or a drunken stupor, depending on which police authorities you talk to.

However, all police authorities agree that hits are extremely addictive — some believe even more addictive than the highly-publicized crack strain of cocaine — and that "hits" are a major law enforcement problem that is just around the corner.

Unlike cocaine or heroin, "hits" are comprised of two drugs which may be prescribed legally — and both are legally produced in the United States.

As penalties for possession of crack and other outright illegal drugs stiffen, and as crack-down efforts continue on these illegal drugs, the popularity of "hits" is sure to rise.

The drug has already surfaced in Belleville arrests. In fact, this week, two arrests for controlled dangerous substances are likely to be "hit" related.

For many drug abusers, "hits" are considered a "value" when compared to the popular crack. A \$10 "hit" lasts for hours, while a \$10 vial of crack wears off in minutes.

But, the "hit" high becomes increasingly more expensive as the abuser's tolerance level rises. One "hit," which is referred to as a "one on one" is enough in the beginning, but in short time the need to go "two on two" and then "three on three" manifests itself in the taker.

Belleville Police recall one re-

cent arrest suspect who openly boasted that he could go "five on five."

Thus, a potential hit epidemic — combined with the current crack epidemic — may lead to even more random quick money crimes in Belleville and through out the Essex area.

Using simply multiplication, 100 hit addicts, each supporting daily "three on three" habits, would have to come up with nearly \$100,000 per month total to keep those habits going strong.

And that could translate into an awful lot of petty crime.

Here in Belleville, the Board of Education is making it a policy to incorporate anti-crack education into the curricula of early grammar school children. However, it is important to target emerging drug abuse patterns — like the hit epidemic which is just around the corner — into this curricula as well.

The Sheriff's Department supplies speakers to any Essex school district requesting them. These speakers are knowledgeable on all types of drug abuse, not only the ones which currently dominate the media.

We urge the Belleville Board of Education — to request Sheriff's Department anti-drug presentations for all township schools, and to make sure that educating students about the dangers of readily available hits is a part of the program.

Further, we urge any Belleville who observes drug activity to utilize — the Sheriff's anti-drug hotline — 623-DRUG.

It is unfortunate that the crack epidemic exploded before it could be nipped in the bud by properly educating our young.

Let's not make the same mistake with "hits."

The Zoning Board

Last Wednesday, five members of the seven-member Zoning Board attended a special session. State law required that a "use variance" receive at least the vote of five members of the Board. Up for consideration, on the evening when only five members appeared, were applications that required a use variance. Attorneys for the applicants decided not to risk the need for 100 percent support from the board members present, and consequently, decided to request a postponement of the hearing until the full complement of seven members was present.

No doubt the absent members, had good reason for their failure, to attend the scheduled meeting. However, it behooves all members of any public body to make every effort to attend meetings and dis-

charge their responsibilities.

Perhaps the appointing authorities should take a look at the attendance records of appointees, to determine whether or not the public interest is being served properly and adequately.

It should be noted that members of the Zoning Board legally known as the Belleville Board of Adjustment serve without pay — sacrifice family life to attend meetings — and equally important — more often than not, take abuse from an outraged public which perceives itself shortchanged. But

when a person accepts appointment to the Zoning Board or the Planning Board, it's known in advance that such service will never qualify a member for a popularity contest — if she or he does the job with diligence and integrity.

Msgr. Louis Fimiani

Last Sunday, more than 1,000 people attended a Mass which saw the installation of Rev. Msgr. Louis Fimiani as Pastor of Holy Family Church.

Msgr. Fimiani fills the vacancy created by the untimely death of Msgr. Francis Blake. Msgr. Fimiani has big shoes to fill. The institution and the parishioners that he can now claim as his own are riches which we are certain Msgr. Fimiani will address with loving, tender care. Msgr. Fimiani is a Bloomfield native, and this accident of geography makes it

easier for the Monsignor to understand his parish and his parishioners than a stranger to our area could. Holy Family Church represents both Nutley and Belleville.

All advance billing indicates that Msgr. Fimiani is a humble but brilliant person. His humility will serve him well as he goes about doing the work of the Lord. We welcome Msgr. Fimiani to our town with open arms and ask that the Lord keep him in good health and bless his work and his people.

Town is neglected...

To the editor:

As a resident and homeowner in the Town of Belleville, I do believe this letter should be published to make people aware of the fact that our town is greatly neglected. The topic should read, "When will Belleville do something about our severe water problem."

I have called Public Works at least three times a week in regards to the dirty, rusty water that flows thru our pipes constantly. I have lost numerous articles and some were very costly. Having five children I must wash nearly every day and I have been unable to do this since this problem is constant.

I am tired of hearing the same response that we get our water from Newark and that they are cleaning the lines. This has gone on now since before summer began.

Then when I placed a call to Public Works in reference to how I might purchase the rust remover that the town had been buying, I am told it is no longer available and that the town could not afford it.

This is pretty annoying, being we have all just received an enormous tax hike. Where are our tax dollars going? I think it is truly a shame that the people of Belleville must stand by and watch this situation go unattended.

If this matter is not corrected in the very near future, I do intend to institute a petition, if I have to get every signature in the Town of Belleville. I would appreciate this letter printed in your newspaper, to alert the town's people.

Mrs. William C. Marshall
Jorammon St.



Letters to the Editor

Spooky front lawn...

To the editor:

I would like to take the time to thank the family on Garden Ave. who decorated their front lawn for Halloween. The scene provided much enjoyment for my four year old daughter, both in the daytime and at night under the

spotlights.

It was also nice to see that to no one was dazed in any way, especially since much effort went into it's making.

Thanks again,

Diane P. Grante
Belleville

Budding politicians...

To the editor:

I would like to take this opportunity to inform Belleville residents of the newly formed political club at Belleville High School. This club's main purpose is to offer the students of Belleville High School a chance to learn about the many different political parties and ideas that exist in our nation. It also provides a time and place for organized discussions and debates on current events local and worldwide.

On behalf of the entire Political Club and our supervisor, Mr. Graves, I want to invite all political candidates and/or their representatives from all political parties to come and speak to us. We are willing and eager to listen. Also, I would like to thank Republican Congressional candidate Thomas Zampino who took the time out from his busy campaign to visit us.

Anthony LaVista, Treasurer
Belleville High School
Political Club

From the Editor's desk...

Last week I had the pleasure of addressing the Belleville Rotary Club as guest of honor at their luncheon in the Forest Hills Field Club.

The Rotary is a group of prominent local business, governmental and cultural leaders, have a keen interest in the affairs of Belleville, and are involved in many worthwhile causes.

In the past, the Rotarians of our town had expressed concern and dismay over what they perceived to be a "negative" slant in the Times coverage of Belleville news.

Club president Bob Gascone said the paper once had a reputation for "picking on the town," but that lately that reputation has changed for the better.

Rotary Programming Chairman David Bryant said the Times has a "new professionalism and objectivity" in its coverage, but township wide there are two very distinct views.

Several members of the business community have at one time or another expressed their concern and dismay over our detailed reporting of often shocking crimes which occur in Belleville. Many feel this puts the township in a bad light. And although most would agree that we do emphasize the good things that go on here, some would definitely like us to tone the crime coverage down.

On the other side of the argument are those who feel that "toning down" is the same as "covering up." The citizens "know that there is crime around them, but we don't know where," to quote one reader who wrote us some months back.

We believe good newspapers should strive for balance in covering all types of news, including crime. Thus, in addition to providing the detailed crime coverage most readers want, we have also included our "Crimebreaker" feature which offers crimefighting tips.

We have also given front page coverage to upcoming meetings of Belleville's Neighborhood Watch program — often side by side with our crime stories.

At the Rotary luncheon, following my explanation of all this, Belleville Police Chief and Rotarian George Lister was asked by one of his fellow Rotarians if this had in fact made any impact on the number of Belleville's showing up for the Neighborhood Watch meetings.

"We used to get about 10 or 11 people showing up," the Chief said. "Last week we got about 63."

The problem is "solving the Palestinian problem," an accommodation between Israel and the Palestinians. Jews and Arabs living together in historic Palestine. An end to war. Peace as the cure for terror — an honorable deal that is based on sound logic, since Middle East terrorism is committed by Palestinians or others acting in their name, so solve the terrorism problem by solving their differences.

Golden Comments

James R. Golden

Unfortunately for Palestinians, Israelis and others who go in and out of the logic-faith. To understand why, one must start asking, who are the terrorists? The major sponsors of Middle East terror are Iran, Syria and Libya. And its major practitioners are Islamic fundamentalists, pro-Syrian nationalists and Palestinian extremists. These groups and states are distinguished not just by their choice of means but by the nature of their end — their end is not peace with Israel.

It is peace with no Israel. The terror groups have different versions of the solution, but none include a Jewish state. For such people, the only peaceful solution to the Middle East dilemma is a peace of the grave, a Zionist grave. Any settlement short of that will leave terrorists unappeased.

Any movement toward a negotiated peace that permits any part of Palestine to remain occupied is considered a threat. Negotiations are a spur, not a deterrent, to terror. Whenever a "peace scare" breaks out, terrorism increases, as King Hussein of Jordan knows during the time he was trying to arrange for joint Jordanian-Palestinian negotiations.

Israel's diplomats in Ankara, Bucharest and Madrid were assassinated. The talks are, off now, and Jordanians abroad are enjoying a rare respite from attack.

Last July Israel Prime Minister Peres flew to Morocco for peace talks with King Hassan II, and before anyone knew the contents of the negotiations, Syria broke off diplomatic relations with Morocco and the P.L.O. declaring it would oppose to the end any outcome.

The fact in the Middle East today is that those who engage in terror do not want peace, and those who want peace are not engaged in terror and that those who seek compromise, at times, get shot.

Syria not only rejects the existence of an Israeli state, it has lit the fuse for a Palestinian state. Syria and its favorite Lebanese terror group, the Syrian Socialist Nationalist Party (SSNP) have a different vision which seeks the merger of Lebanon, Syria, Kuwait and Cyprus into a Greater Syria.

Abu Nidal, a Palestinian says, "Syria for us in the mother country." For 2,000 years the Palestinians have not lived in an independent territory. Palestine of the future must be incorporated within Syrian territory.

Such people will not retire even if Israel makes the most generous concession and gives up the West Bank in favor of a Palestinian state. Even a West Bank solution will leave all to today's major terror groups and their sponsoring states aggrieved and in the field.

Even if peace were attainable, terrorism would outlive peace because the Arab Israeli dispute is not the sole — the root — cause of terror in the Middle East. There being other fundamental causes of instability, war and murder.

There is the anti-Western, anti-modern, antisecularist movement sweeping the Islamic world that no already wholly captured Iran.

The anti-Zion campaign is but the leading sharp edge of a larger anti-Western campaign, one concerned with expelling an alien and corrupting West from the Islamic world. The Ayatollah has had much to say on the subject.

The terrorism is at war with the West or, more precisely, with Western influence in the Middle East. This anti-Western strain is nationalistic. The grievance being that after centuries of ascendancy, the Arab world has in modern times been subordinated by the West, first by naked colonialism, now by more subtle devices of political, cultural and economic neo-colonialism. It is resented.



Bookmarks...

Win at work

Recently added to the video cassette collection of the Belleville Public Library is the tape "Winning at Work." This is the first in a multi-part series designed to help one get ahead in the corporate and business world. Reap the rewards of the valuable skills needed to get a job, such as writing a sound resume, preparing for an interview, projecting a polished professional image, managing time, turning deadly stress into creative energy, and becoming a team player.

To borrow videotapes from the Library you must live or work in Belleville to qualify for a library card. The fee is \$1 per night and \$2 on weekends and holidays.

Best Sellers

The following fiction best sellers are currently available at the Belleville Public Library, 221 Washington Avenue. The include *It* by Stephen King, *Red Storm Rising* by Tom Clancy, *Hollywood Husbands* by Jackie Collins, *Wanderlust* by Danielle Steel, *Through a Glass Darkly* by Karen Koehn, *Rogers' Version* by John Updike.

Also, *The Beet Queen* by Louise Erdrich, *The Golden Cup* by Belva Plain, *Foundation and Earth* by Isaac Asimov, *A Matter of Honor* by Jeffrey Archer, *Fortune of Fear* by I. L. Hubbard, *Last of the Breed* by Louis L'Amour, *The Good Mother* by Sue Miller and *Suspects* by William Caunitz.

To reserve these titles, call the circulation desk at 450-3434. There is a 25 cent charge per book for reserves.

Investment seminar Nov. 20

An investment seminar on tax reform with James Turner, account executive with Dean Witter Reynolds will take place Nov. 20 at 7:30 p.m. at the Library.

Turner will examine the most sweeping overhaul of the federal tax system in history. Specifically, individual tax rates, capital gains, and other issues will be discussed in relation to providing new investment strategies to maximize returns.

The seminar will be approx. 1 hour in length with a question and answer period. Call the Library at 450-3434 or Jim Turner at 785-7978 to make reservations.

Christmas craft workshop

The Library will be running several holiday craft workshops open to the public by registration. On Wednesday, Nov. 12 at 10:30 a.m., "Painting Christmas White" will be the craft; on Saturday, Nov. 29 at 10 a.m., "Tree Trimmers," and on Saturday, Dec. 6 at 10 a.m., "Christmas Bow Pins." Christine DeAngelis will conduct the workshop.

Call the Library at 450-3434 to register.

Questions, we get questions...

Questions recently asked at the Library's information desk:

1. Do you have any information on the new addition to the town hall?
2. What is the home address of Luciano Pavarotti?
3. What is the Septuagint?
4. Do you have a recipe for pumpkin pie?
5. Do you have any books on death and dying?
6. What are the addresses of New Jersey's Senators and Assemblymen from Belleville?
7. What is the address of the General Electric Co. and their chief officers?
8. Do you have any books on writing a letter of recommendation?
9. Do you have a list of businesses in Belleville?
10. Do you have any information on starting a small business?

If you need help to answer any question you may have, call the Library's information desk at 450-3434 or come in person to the Library.

Bellevillite chairs the team

Child Support Commission presents Kean with report

The New Jersey State Child Support Commission presented its second annual report to Governor Thomas Kean this past Tuesday at a ceremony in Trenton. Thomas P. Zampino of Belleville, chairman of the commission, termed the report to be an "effective review of the child support collection system in New Jersey."

Coming November 22

Breakfast with Mrs. Santa

Mrs. Santa Claus will be at Christ Church, 393 Washington Avenue, Belleville, to have breakfast on November 22 from 8:30 to 9:30 a.m.

The cost will be \$1.50 per person and includes a donut, hot beverage and a special gift for the children. Mrs. Santa will lead a sing along and will be available for

pictures. At 9:40, she will head up the Parade of Children to officially open "Christmas on Candy Cane Lane."

Advanced reservations are suggested and can be made by sending check or money order with your name and the number of people attending to Christ Church attention: Breakfast.

Governor's outer office and attended by members of the commission and the public.

In his accepting remarks, the Governor thanked the members for their efforts over the last two years on behalf of those children who receive support and promised to give his attention to those recommendations set forth in the report.

The report determined that county probation departments experience a high turnover rate because of low salaries that average \$12,000 for probation investigators who must have a college education.

The commission suggested that current civil service requirements for child support employment positions be revised and that higher uniform salaries be paid throughout the state.

LAIDE'S DELI
74 Holmes Street
Belleville, N.J. 07109
759-1396

Weekly Specials

Boiled Ham

\$2.89 per lb.

Yellow or White
American Cheese

\$2.49 per lb.

Cigarettes

\$1.30 per pack

We Carry

Newspapers - Pick-Up

Coffee

Breakfast and Lunch

Open 6 Days

Mon.-Fri. 6 AM-7:30 PM

Saturdays 8 AM-7 PM

SHOP EARLY - BEAT THE CROWDS

Land O'Lakes
Margarine
69¢ lb.

VITO SYLVESTRO'S GARDEN MEAT MARKET
166 GARDEN AV., BELLEVILLE, N.J.
PHONE 759-1069

IT'S BETTER
IN
BELLEVILLE

**FREE PARKING
DELIVERY**

ASK ABOUT
OUR COMPLETE
FREEZER PLAN

TENDER
EXTRA LEAN
PEPPER STEAK
2.79 lb.

Extra Lean
CHUCK
CHOP
1.89 lb.
8.95
No Fillers Added
ROMANO
MACARONI
CHEESE
3.99 lb.
GRATED PARMESAN

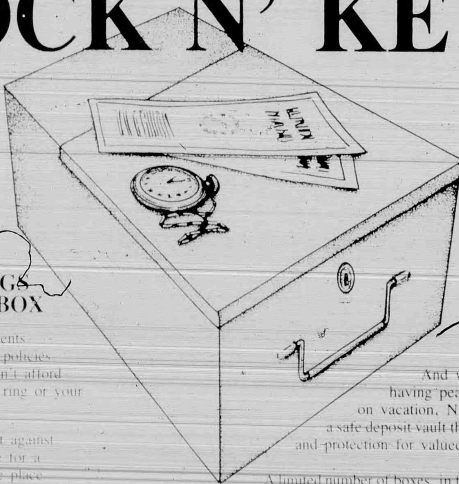
FOOD STAMPS ACCEPTED
100% Pure Pork
Homemade
ITALIAN
SAUSAGE
1.99 lb.

ITALIAN STYLE
VEAL
CUTLETS
4.89
CUT FROM
LEG
Extra Lean
PORK
CUTLETS
2.39 lb.

ASTI 100%
OLIVE OIL
8.99 GALLON
VEAL
For Veal & Pepper
or Veal Stew
2.89 lb.

• FROZEN FOODS • FRUIT & VEGETABLES • FRESH FISH • ITALIAN SPECIALTIES •

PUT YOUR PEACE OF MIND UNDER LOCK N' KEY



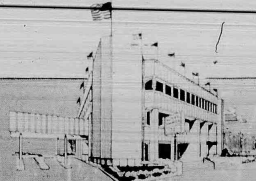
WITH A NUTLEY SAVINGS SAFE DEPOSIT BOX

For those important documents, deeds, wills and insurance policies. For those valuables you can't afford to lose - like your diamond ring or your grandfather's gold watch.

It's an ideal way to protect against fire and theft and to provide for a safe and convenient storage place.

And when it comes to having peace of mind while on vacation, Nutley Savings has a safe deposit vault that offers security and protection for valued possessions.

A limited number of boxes, in five sizes ranging from 3x5 to 10x10, are now available. Play it safe. For complete details stop in during regular banking hours or call 661-3200.



Nutley Savings
AND LOAN ASSOCIATION

celebrating
"Our first 100 years"

MAIN OFFICE:
371 Franklin Avenue • Nutley, N.J. 07110 • 661-3200
BRANCH OFFICE:
221 Washington Street • Newark, N.J. 07102 • 665-7080

PRACTICE LIMITED TO ORTHODONTICS



NUTLEY PROFESSIONAL BUILDING
175 FRANKLIN AVENUE
NUTLEY, NEW JERSEY
667-6850



For charity's sake — Pete Vaccarelli, owner of For Pete's Sake Tavern on Belleville Avenue, held a benefit picnic earlier this fall with the proceeds going to Belleville Special Olympics. Pictured left is Vaccarelli presenting the \$300 check to Joe Ruffalo, president of Belleville Special Olympics (Photo by Catherine A. Acevedo)

\$19

DENTAL EXAMINATION
Includes Cleaning*
and X-Rays
(Reg. \$85.00) With This Ad Only

- INSURANCE HONORED
- SPECIAL ATTENTION TO SENIOR CITIZENS

* Excludes any Periodontal Therapy

CALL TODAY FOR
AN IMMEDIATE
APPOINTMENT
284-1011

Dr. S. Herman
**GROUP DENTAL
ASSOCIATES, P.A.**

175 Franklin Ave., Nutley, N.J.
Open Evenings, Weekdays & Saturdays
9:00am - 11:30pm

JOIN OUR

Holiday Club

**FREE CASH PAYMENT
AND
FREE VALUABLE GIFT**

\$10 Club
Choose one of two
3½" x 5" frames.

\$5 Club
Choose one of two styles in
sizes 2¼" x 3" or 3" x 3" frames.

\$20 & \$25 Clubs
Choose a 5" x 5"
or 5" x 7" frame.

\$50 Club
Choose one of two designer
styled 8" x 10" frames.

All frames are genuine solid brass.

Choose one beautiful solid brass picture frame for each club opened. Stop into any one of our branch offices and see these beautiful frames on display. Come early for the best selection, and open your Holiday Club at any of The Trust Company's conveniently located offices. Hurry, supplies are limited! **OPEN YOUR CLUB TODAY.**

CALL TOLL FREE 1-800-223-BANK
THE TRUST COMPANY
OF NEW JERSEY

The Billion Dollar Bank with Roots

Executive Office: Journal Square, Jersey City, N.J. (201) 420-2500
Offices: Princeton, Bergen, Essex, Hudson, Middlesex, Morris & Passaic Counties, Member FDIC



A timely gift — The Belleville Women's Club and Belleville Junior Women's Club together donated a handsome wall clock for use at the newly named Shafter Branch Library in the Silver Lake section of Belleville. Pictured (l. r.) are Belleville Junior Women's Club President Judy Paolella, Mrs. Richard A. Shafter, Belleville Women's Club President Lenora Keeney, Belleville Library Director David Bryant. (Photo by Christopher Bufani)

1885

1986

101 Years of Uninterrupted Dividends

**INTRODUCING
JUDY CUNNINGHAM**

FIRST DeWITT'S WEST ESSEX
MORTGAGE REP!

JUDY CUNNINGHAM

First DeWitt Savings has a variety of unique and attractive mortgage plans available for West Essex residents! Judy is our very capable expert in helping residents get the best deals for their clients. She and her staff can explain the advantages of our low rate adjustable mortgages (ARMs) with annual and lifetime ceilings, or our fixed rate 15 and 30 year mortgages with fixed payments — no changes, no rate adjustments. Call Judy today. She'll give you fast professional service throughout Belleville, Bloomfield, Glen Ridge, Montclair, Verona, Cedar Grove, Nubley, and the Caldwell's.

**FIRST DeWITT
SAVINGS**
AND LOAN ASSOCIATION

For Mortgage Services In West Essex Call Judy Cunningham at

PHONE **751-2800** PAGER **661-5895**

"WE WORK WELL TOGETHER"
Old Fashioned Expertise and High Efficiency Service
Full Service Oil Company

- Plumbing & Heating Contractors
- Automatic Delivery • Budget Payments & Cash Discounts
- Design & Service Gas Oil Heating Systems
- E-Z Credit Approval - 100% Financing

WEIL-McLAIN
TRAFFORD

**CEDAR HILL
OIL CO.**
485-6400

**FOR
PROMPT
SERVICE**

PAR ENERGY
485-6404



Crimebreaker!

Preventing missing children

Between 1.3 and 1.8 million children are reported missing in the United States every year. Some run away, others are abducted by strangers or by parents. Each year between 20,000 and 50,000 cases of missing children remain unsolved by the police.

Parents can take positive actions to protect their children. They can teach them:

- That no adult has authority over them simply by virtue of size — that the children can say no.
- To know their home address, including the city and state, and phone number with area code.
- To use both pushbutton and dial phones for local and long distance calls.
- To memorize emergency phone numbers.
- To run to the nearest public place, store or police station, if they feel unsafe.
- To watch for enticements from strangers — like candy, gifts, money, or requests to help find a lost dog or cat.
- Not to get close to a car if a stranger calls out for directions or anything else. It is easy for a stranger to pull a child in to a car.
- Not to open the door to strangers.
- Not to tell others that mom or dad isn't home. Say they can't come to the phone and will call back.
- Not to walk alone if they can help it.
- To walk near the curb or lighted streets at night, and against the traffic, and to travel known routes.
- To run away, scream and make lots of noise if they are followed or grabbed by a stranger. The last thing a dangerous stranger wants is a lot of attention.
- To go to the checkout counter and wait to be called on the loudspeaker if they are separated from you in a store.
- Never to go out to a parking lot alone.
- To tell parents immediately if anyone or any incident has made them feel uncomfortable.

Finally, parents should keep recent, clear photographs of their children in at least two different poses.

Amato takes Essex, wins Belleville 4-1

(Continued from page 1)

an unusual one. Democrats and Republicans mingled, as both claimed a victory.

One Democrat, an official in the tax office, said, "At least, with Amato, we get a real deal. With Peter, we didn't get any deal."

The election climaxed two terms of acrimony between Shapiro and the Democratic organization. By distancing himself from the party, he won some standing for independence. But when he needed the party organization in his back to the wall fight with Amato, the organization threw its support to his opponent.

School 8 celebrates Halloween

School 8 had its annual Halloween parade in Clearman Field on Friday, October 31 at 4 p.m. After the parade Home and School Association raffled off seven pumpkins, one per grade. The winners were

For Amato, a life-long Democrat turned Republican, the challenge is to maintain the coalition that elected him.

A man with a reputation for independence and shrewdness, he is expected to be a strong executive. Kean was represented at the vic-

celebrating by Community Affairs Commissioner Leonard Coleman. Also prominent was Bo Sullivan, a candidate in the past for the governorship, who is expected to make another bid for that job when Kean's second term ends.

But Amato now has a strong and highly viable platform to be seen in statewide politics, a new force to reckon with.

Kindergarten, Christine Bernal; 1st grade, Nuno Fernandez; 2nd grade, Mario Caruso; 3rd grade, Robert Caputo; 4th grade, Angela DiVenuto; 5th grade, Robert Manza; and 6th grade, John Alvarado.

BEN'S

LOCK AND GLASS

(Formerly of Contemporary Glass)

- Plate & Safety Glass Replacements
- Commercial Door & Closer
- Repairs and Installation
- Replacement Windows
- Storm Windows & Doors
- Sliding Patio Doors
- Plexiglass
- Locks

- Screens Repaired
- Custom Mirrored Walls
- Tub & Shower Enclosures
- Locks Installed
- Keys Made
- Furniture Tops
- Shutters

FREE ESTIMATES!

CALL TODAY 661-3857

FALL HOME FASHION UPDATE

SAVE TIME SAVE MONEY AT RICH'S

CURTAINS
Dollar Saving Values on the Largest, Freshest Collection Featuring New Colors and Styles for Kitchens or Any Room.

WINDOW SHADES
Joanna Custom or Ready-Made Window Shades, Fabrics, Vinyls, Translucent or Darkening. Bring Your Measurements.

VERTICAL BLINDS
New Collection of Fashion Fabrics and Colors. Featuring: Petite Pleat, John Shantung, Tapestry, Pointe and Many More.

BEDSPREADS
Contemporary, Traditional, Herbig, Solid, Hand Painted, Outline and Embroidered. Quilted. You Must See The Selection!

SAVE UP TO 30%

25% OFF

SAVE 50%

SAVE UP TO 25%

DATELINE TODAY
Call Our Custom Dept. Today for a Home Fashion Update: Draperies, Pleated Shades, Wood Blinds, Balloon Shades and Much, Much More...
*Installed in Time for the Holidays!

MASTERCARD & VISA ACCEPTED

AMPLE PARKING AT ALL LOCATIONS

Rich's

CURTAINS

HOME FASHION CENTERS

BLOOMFIELD, NJ 452 BROAD ST. 743-9600

PARSIPPANY, NJ 782 ROUTE 45 WEST 263-1515

NO. ARLINGTON, NJ 356 RIDGE ROAD 997-4373

THE RICH LOOK AT THE RIGHT PRICE

FRADE'S DELI & CATERERS

Michael Frade

Imported Italian pastas, cheeses and cold cuts, catering for all occasions.

311-313 Union Avenue Belleville • 759-3509

Michael W. Freda, D.M.D.
and
Anthony T. Suriano, D.M.D.

announce the opening of
their practice limited to Orthodontics

Clear and invisible braces are available
for adults and children

Evenings and Saturday appointments

307 Broad St. Bloomfield • 748-2248

MON
TUE
WED
THU
FRI
SAT
SUN

JAN
FEB
MAR

This beautiful
Calendrier
Perpetuel
yours as a gift
when you join our
1987 Christmas Club.

In addition...we'll make your
last payment for you!

Join today and have money when you need it!
Your 1987 Christmas Club comes through just in time to make your holiday shopping a joy. The 1987 Christmas Club Calendar is yours to enjoy when you open your \$5-\$10-\$20 or \$25 weekly Christmas Club account. Available while the supply lasts, join today.

THE PROVIDENT

Offices throughout New Jersey • Member FDIC

1ST NATIONWIDE NETWORK

WE MOVED

LUBE, OIL CHANGE & FILTER

\$15.88

10W-40 VALVOLINE

(Foreign Car Filter & Diesel Oil Add \$3.00)

GUARANTEED WHEEL ALIGNMENT

\$19.88

WARRANTED 90 DAYS OR 4,000 MILES, WHICHEVER COMES FIRST

• Inspect all four tires, correct air pressure • Set front center and toe to driver's alignment • Inspect suspension and steering systems

U.S. cars and imports with adjustable suspension • Front wheel drive and Chevrolet (\$34.95)

Radiator and Cooling System Service

Includes:

- Check entire cooling system
- Radiator, cap, water pump, all belts, hoses, and fan connections
- Pressure check system
- Drain and refill with up to two gallons anti-freeze

\$ 29.95

Transmission Maintenance

\$49.88

U.S. cars, some imports. Additional parts and service extra if needed.

- Replace transmission fluid
- Install new pan gasket
- Replace transmission filter screen
- Adjust linkage and bands, as applicable

Guaranteed 12-Month Tune-Up

Electronic Ignition Systems

\$42.

4 Cyl.

\$49.

6 Cyl.

\$53.

8 Cyl.

- Includes up to 3 free engine analyses and tune-up adjustment anytime within one year.
- Most U.S. cars, many imports and light trucks • Additional parts and service extra if needed.
- Check charging, starting and engine systems • New spark plugs • Set timing to recommended specs • Adjust carburetor, where applicable.

FREE Brake & Front End Inspection

NO PURCHASE NECESSARY

BRAKE SERVICE

DISC OR DRUM 69.88

Import and Domestic cars. Additional parts and service extra if needed.

Includes: Initial brake front & rear inspection • Set front center and toe to driver's alignment • Inspect suspension and steering systems

2 Wheel Front Disc: Install new brake lining and resurface all front rotors, inspect calipers

2 Wheel Drum: Install new brake lining and resurface rear drums

Warranted 12 months or 12,000 miles, whichever comes first. Semi-metallic lining \$28.00.

OUR NEW LOCATION: corner of Joralemon and Ralph St. across from K-Mart Shopping Center

TIRE OF NUTLEY/BELLEVILLE

- We Do Professional Work
- We Only Do Work That Is Authorized
- We Return Worn Parts

FREE WRITTEN ESTIMATES

GOODYEAR

142 RALPH ST. BELLEVILLE

CALL 353-7777

Events in the Area

Organizations for area singles

The ABC (Alone by Choice or Chance) 30 Plus group of the Passaic-Clifton YM-YWHA meets Tuesday evenings at the Y, 199 Scoles Ave. Clifton. For more information, call Janet Packer at 779-2980.

New Jersey Moonrakers, a club catering exclusively to tall and single adults, meets 8:30 p.m. every second Tuesday of the month at the Meadowlands Hilton, 2 Harmon Plaza, Secaucus. All ages. \$3 for guests, free for members. 298-0964.

The Singles Connection, widowed, divorced, separated, first and third Thursdays, 8 to 11 p.m., Grace Episcopal Church, 200 Highfield Lane, Nutley. Rap groups, music, dancing. \$3. 235-1177.

Jewish Singles Friday night dance, 20's and 30's 797-6877.

A New Beginning pub mixer at Allan's Place, 522 Franklin Ave., Nutley, second and fourth Wednesdays after 8 p.m. Life music, drinks, conversation. 661-3357 or 667-9898.

Singles dance, 7:30 p.m. to 12:30 a.m. Wednesdays, Springfield Manor, 2800 Springfield Ave., Union. Social, ballroom dancing, Orchestra, DJ, big band sound.

Success Oriented Singles (SOS) meets 8:15 p.m. the first and third Fridays of the month. For more information, call 751-1419 or 226-5999.

Sacred Heart Singles will meet 8 p.m. Nov. 14 in Nardiello Hall, 12 State St., Bloomfield. Gloria Lessard will conduct a beauty care and color clinic. Also, poker lessons. Refreshments. Admission: \$2.

The Gregory Club of New Jersey, a 30 plus singles group, will hear Sgt. Robert DeBelloc of the Nutley Police Dept. discuss securing your home against burglaries 9 p.m. Nov. 14 at the Nutley Red Cross Building, 169 Chestnut St. Refreshments, social. For information, call Ann at 365-1298.

Upcoming class reunions listed

Nutley High School Class of 1951, will hold a reunion Nov. 29 at the Ramada Inn Clifton. Seeking class members. Peter Marshall, 933-4815.

Belleville High School Class of 1976, November, 1986. Anthony Nicosia, 751-6474; Debbie Current, 751-8534; Kathy Gino, 429-7347; Diane DeMayo, 736-2426.

Nutley High School Class of 1967, Alan DeFabbio, 661-2110 or Russell Catanzarite, 661-2093.

Belleville High School Class of 1966 Nov. 29, the Aspen, Parsippany, P.O. Box 666, Belleville.

Nutley High School Class of 1956 this November, Rose LaDolcetta Heim, 338-8614.

Nutley High School Class of 1941 Nov. 15, Friar Tuck, Cedar Grove, Lloyd Newsome, 65 Hawthorne Place, Montclair, 07042, 783-9162.

Barringer High School, Newark, Classes 1940 through 1945, mid-November, 226-5470 or 239-7385.

West Side High School, Newark, Classes of January and June 1936 seek members for reunion. Names, addresses and telephone numbers to Guy Lance Dept., West Side High School, 403 South Orange Ave., Newark, 07103.

Belleville High School Class of 1937, 50th reunion May 16 at Forest Hill Country Club, Bloomfield. Bob Shaughnessy at 759-2506 or Bus Gausepohl at 748-5297.

Nutley High School Class of 1976, 7:30 p.m. Nov. 28 at the Landmark 1, E. Rutherford, Joanne Cocchiola Ciancimino at 235-0697 or Kim McDonald Carissimo at 667-2004.

Nutley High School classes of January and June 1937, May 2, 1987 at Nutley, Iks, Julia Guidice Frichman, 625 Centre St., Nutley, 661-6677 or Mavis Koch MacKay, 181 River Road, Apt. 5G, Bldg. 3, Nutley, 667-3871.

Belleville High School class of 1952 March 28 at The Chandelier, Belleville. Phyllis at 759-7064, Mildred at 661-1854 or write to Mrs. Cairo, 110 Highfield Lane, Nutley, 07110.

West Side High School Class of 1937, Tobey Kroll Rothbard, 940 Minnisking Way, Westfield, 07090, 232-2015.

Epilepsy Support group organizing

An Epilepsy Support group is organizing in Essex County and will be meeting on fourth Wednesday of each month at the Bloomfield Civic Center, 84 Broad St. Next meeting: Nov. 19 at 7:30 p.m. Everyone in the area with this problem is urged to attend.

Indoor craft show at St. Val's

St. Valentine's School PTA is holding its 5th annual indoor craft show and flea market 10 a.m. to 5 p.m. Nov. 8 in the church basement hall, 236 Hoover Ave., Bloomfield. Refreshments available. Free admission.

Ner Tamid Sisterhood Nov. 17

The Sisterhood of Temple Ner Tamid will present a special program 8 p.m. Nov. 17. A professional group of cabaret performers will perform a variety of selections from Broadway musicals.

Entertainment '87 books at \$30

St. Mary's Home and School Association is selling Entertainment '87 books at \$30. Discounts on sporting events, dining, theatre, travel. Call Debbie Mowad at 667-5081 or call at St. Mary's School office, Msgr. Owens Place, Nutley, 8:30 a.m. to 3 p.m.

Santa Train Ride leaves Nov. 28

The Junior Woman's Club of Belleville is sponsoring a Santa Train Ride Nov. 28. Train departs Kingsland train stop, Lyndhurst, at 10:30 a.m. Returns at 12:40 p.m. Snack gift from Santa. Price—\$6.50. All riders must pay. Advance tickets only. Call 759-8669 or 667-8359.

Chinese auction set Nov. 14

Belleville Reformed Church, Main and Rutgers streets, will sponsor a Chinese auction 7:30 p.m. Nov. 14. Tickets \$3. Call 759-2207 or 751-2262.

Bloomfield Symphony concert

Bloomfield Symphony Orchestra will present its fall concert 3 p.m. Nov. 9 at North Middle School, Huck Road off Broad St. Soloist: harpist Jane Wachter. Admission: \$2.

World Community Day services

Church Women United will hold World Community Day services 2 p.m. Nov. 7 at Montgomery Presbyterian Church, Mill St., Belleville. Refreshments at 1 p.m. Speaker: Rev. Catherine Ziel. Articles for Geriatric Hospital boutique would be appreciated.

Kid Kats Cafe Talent Show

The Nutley Parks and Recreation Dept. and the Nutley Junior Woman's Club are sponsoring a "Kid Kats Cafe Talent Show" 7:30 p.m. Nov. 14 at Franklin Middle School. Children 3 to 15 may enter in categories of tap, jazz, ballet, lyrical, contemporary and acro-gymnastics. Students can enter more than one category and will be judged against their own age group. For more information, call Marcia Wasvary at 667-2241 or Marie Vicchiarello at 667-3731.

Craft show/flea market Nov. 8

St. Valentine's School PTA will hold its fifth annual indoor craft show flea market 10 a.m. to 5 p.m. Nov. 8 at St. Valentine's Church Hall, 236 Hoover Ave., Bloomfield. For tables at \$15, call 743-1490 or 338-9076.

Christmas boutique Nov. 8

Orange Life Members Retirees of the Telephone Pioneers will sponsor a boutique 10 a.m. to 4 p.m. Nov. 8 at Park United Methodist Church, 120 Broad St., Bloomfield. Proceeds to needy families. Afghans, baby outfits, Christmas chime critters, satin glass candles, tree ornaments, pastries, etc.

Flea market at Sacred Heart

An indoor bash outdoor flea market will be held 9:30 a.m. to 4:30 p.m. Nov. 8 at Sacred Heart Parish Hall, Park Ave. and Ridge St., Newark. Table rental at \$12. Free parking, no admission. To benefit Sacred Heart Cathedral. For information, call 484-4600.

Adult education program at temple

The Sisterhood of Temple Ner Tamid, Broad St., Bloomfield, will present its adult education program 10 a.m. every Wednesday through Dec. 10. Rabbi Steven Kushner will present a series of classes entitled "Women and Women's Issues in the Bible." Call the temple for more information.

Holiday craft fair Nov. 29

The Nutley Jaycees will host a holiday craft fair at Nutley Savings and Loan, 371 Franklin Ave., 10 a.m. to 5 p.m. Nov. 29. Baked goods, pictures with Santa Claus. For more information or table rental at \$15, call Diane DeKenipp at 450-0043.

Domestic violence discussion

The Essex Chapter of Medical Assistants will host a program on domestic violence 7:45 p.m. Nov. 12 in the doctors' lecture hall at Clara Maass Medical Center, Belleville. For more information on the program or the group, call Joy Hafer at 762-1144.

Christmas Boutique opens Nov. 8

Sacred Heart Home and School Association will hold its annual Christmas Boutique 10 a.m. to 4 p.m. Nov. 8 at Nardiello Hall, 12 State St., Bloomfield. Handmade crafts, Christmas gifts, baked goods, cake and coffee.

Alzheimer's Support Group Nov. 10

Clifton Alzheimer's Disease Family Support Group will meet 7:30 p.m. Nov. 10 at St. Paul's Church Hall, corner of Union Avenue and Second St., Clifton. No admission or fee. Everyone invited. For more information or directions, call Alice at 472-7414 or Mary Anne at 478-0564.

Hospice benefit luncheon Nov. 12

The Third Annual Luncheon to benefit The Hospice Inc. of Montclair, will be held noon Nov. 12 at Mountain Ridge Country Club, West Caldwell. Boutiques open at 11 a.m. For tickets at \$40, call 783-7879.

Craft fair at Demarest Nov. 22

Demarest Home and School Association, 465 Broughlon Ave., Bloomfield, will hold its 6th annual craft fair 10 a.m. to 4 p.m. Nov. 22. New items, baked goods.

Holiday House Boutique opening

Holiday House Boutique will be held Nov. 8 to 16 at Kingsland Manor, 3 Kingsland Ave., Nutley. Antiques and handcrafted items from over 100 crafters. A \$50 donation will go to the restoration of Kingsland Manor. Hours: 10 a.m. to 6 p.m. Nov. 8, 9, 15, 16, to 9 p.m. Nov. 10 to 14.

St. Peter's flea market Nov. 15

St. Peter's School Sports and P.T.G. Association will hold an indoor flea market 10 to 4 p.m. Nov. 15 at 152 William St. For table rental, call 751-6469.

Juniors sponsoring blood drive

The Junior Woman's Club of Belleville will sponsor a blood drive 1 to 5 p.m. Nov. 20 at the municipal parking lot next to Town Hall.

Lions Club card party Nov. 21

The Lions Club of Bloomfield will hold its 37th annual card party 7 p.m. Nov. 21 at North Junior High School cafeteria, Huck Road. Refreshments, gifts. Donation: \$4. Bring your own cards. For tickets, contact any Lion or call Joseph Kliminski at 748-3600 or George W. Pepin at 748-7211.

Victorian architecture at Oakeside

A lecture slide presentation on varied styles of Victorian architecture will be presented 2 p.m. Nov. 9 at Oakeside Bloomfield Cultural Center, 240 Belleville Ave., Bloomfield. Speaker: Christine Laidlaw. Bring photos and questions.

Card party, dinner at Biase's

Carteret School will hold its annual card party and dinner, "The Year of the Tiger," 6:30 p.m. Nov. 21 at Biase's Restaurant, Newark. For tickets, call Molly Colasanti at 429-7995 or Judy Sierchio at 743-1590. To donate a gift, call Pat Cifelli at 429-0323.

Child care centers information

Parents searching for child care can find information about licensed child care centers near their work or home through the state's first Child Care Resource and Referral system. Directory includes information about locations, sessions, age groups, capacity and availability of transportation. Suburban Essex County residents can contact Program for Parents at 857-5171.

Roche Retirees meet Nov. 8

Roche Retiree Club will meet 1:30 p.m. Nov. 8 at building 76 auditorium. Election of officers and trustees, entertainment by "The Four Old Timers Quartet."

Christmas fair at Wesley Nov. 8

The Women's Society of Wesley United Methodist Church, 225 Washington Ave., Belleville, will sponsor its annual Christmas fair, 9:30 a.m. to 4 p.m. Nov. 8. Games, lunch, snack bar, baked goods. Christmas items.

World Community Day Nov. 7

Church Women United celebrates World Community Day services 2 p.m. Nov. 7 at Montgomery Presbyterian Church, Mill St., Belleville. Refreshments at 1 p.m. Guest speaker: Rev. Janet Ziel.

20th anniversary dinner dance

Belleville Italian American Civic Association will sponsor its 20th anniversary dinner and dance Nov. 15 at Wayne Manor, Wayne. Music by The Perfect Combination. For tickets at \$37.50 per person, call Al Vecchiene at 759-2622, Chris Albanese at 759-3314 or Lee Carlo at 759-8174.

Holy Family Guild card party

The Nutley Belleville Holy Family Guild of the Missionary Servants of the Most Holy Trinity will sponsor a card party 7:30 p.m. Nov. 7 at Nutley Savings and Loan, 371 Franklin Ave. Donation: \$3. Refreshments. Tickets may be purchased at the door.

Bazaar Nov. 6 at Civic Center

North Essex Chapter 57, American Association of Retired Persons, will hold its annual bazaar 9 a.m. to 4 p.m. Nov. 6 at the Bloomfield Civic Center, 84 Broad St. Jewelry, books, Christmas items, good as new, homebaked goods, plants, cake and coffee available. Free admission.

Progressive dinner Dec. 13

The Kingsland Trust, the Nutley Historical Society and the Woman's Club of Nutley will hold its annual progressive dinner Dec. 13. Hors d'oeuvres 6:30 p.m. at the Woman's Club, dinner 7:30 p.m. at the Historical Society, dessert 9 p.m. at Kingsland Manor. For reservations at \$20, call 230-0004.

Cub Scout spaghetti dinner Nov. 15

Cub Scout Pack 350 will host its second annual spaghetti dinner 4 to 7:30 p.m. Nov. 15 at Fewsmith Memorial Presbyterian Church, 444 Union Ave., Belleville. Spaghetti and meatballs, salad, dessert, beverage. Adults, \$3.50; seniors, \$3; children under 12, \$2.50. Tickets at the door but advanced reservations recommended. Call 759-6624 after 5 p.m.

SYA dinner dance at Cotillion

Special Young Adults of Nutley will hold its 11th annual benefit dinner dance 7 p.m. to midnight Nov. 7 at the Cotillion Restaurant, Garfield. Open bar. Dance music by Fresh. For tickets or more information, call Matthew Pica at 759-5376 or 488-0500 or Ernie Della Penna at 667-6107.

Sisterhood's Chinese auction

The Sisterhood of Congregation Ahavath Achim will hold its annual Chinese auction 7:30 p.m. Nov. 19 in Sisterhood Hall, 125 Academy St., Belleville. Donation of \$5 includes giftshirts. Tickets available at Atlantic Union, 444 Washington Ave. and Michael's Mens and Boys Shop, 138 Washington Ave.

Fashion show, luncheon Nov. 8

Essex County Legal Secretaries Association will sponsor its annual scholarship benefit fashion show and luncheon 12 to 4 p.m. Nov. 8 at Town and Campus, 350 Pleasant Valley Way, West Orange. For more information, call Wilma Williams at 759-2807 from 9 a.m. to 5 p.m. or Henrietta McMillan at 674-3124 after 5 p.m.

Quality Control society Nov. 19

American Society for Quality Control, North Jersey Section, will meet 7 p.m. Nov. 19 at ITT auditorium, 300 Kingsland St., Nutley.

Woman's Club holiday bazaar

The Woman's Club of Bloomfield will hold its annual holiday bazaar 10 a.m. to 4 p.m. Dec. 5 at the Civic Center, 84 Broad St. Lunch from 11:30 to 2 p.m. Unique items, homemade gifts.

Retired Persons meet Nov. 12

North Essex Chapter 57 of the American Association of Retired Persons will meet 1 p.m. Nov. 12 at Bloomfield Presbyterian Church on the Green. Coffee and cake available at noon. Frank DeVivo will speak on "Know Your Rights."

Lunch will be served Nov. 12

The Evening Membership Dept. of the Nutley Woman's Club will hold a luncheon 11 a.m. to 2 p.m. Nov. 12 at the clubhouse, 216 Chestnut St. Tickets are \$3.50. For advance reservations, call 667-7120.

Cosmopolitan Club schedule

The Cosmopolitan Association, a group for foreign born women and their daughters, meets 7:30 p.m. every second Thursday at Bloomfield Civic Center, 84 Broad St. Meetings resume in September. Associates and friends welcome as guests.

Old Guard of Belleville meets

The Old Guard of Belleville meets the 2nd and 4th Tuesdays of each month at Fewsmith Church hall, Union Ave., Belleville.

To be included in this column, news items must reach us by the Friday preceding publication. Coverage will be limited to events in the Belleville, Bloomfield and Nutley area primarily. Out of the area events will be covered only if space permits. Send releases to Events in the Area, Orechio Publications, 800 Bloomfield Ave., Nutley, N.J., 07110.

SAVE LOTS ON RED DOTS.

GRAND UNION

Isberg Litter **69¢**
Chicken Drumsticks **99¢**
Del Monte Corn **79¢**
Soybean Meal **79¢**
Soybean Meal **79¢**
Soybean Meal **79¢**

Look for our colorful flyer in your newspaper, mail or pick up a free copy at your local Grand Union.

SAVE LOTS ON RED DOTS.

U.S.D.A. Choice - Boneless Beef
Bottom Round Roast
149¢
lb.

Cream Style Corn (17-oz.) or Regular or No Salt Added Whole Kernel Corn (17-oz.), Sweet Peas (17-oz.) or Cut or French Style
Del Monte Green Beans
2 79¢
1-lb. Cans

Super GRAND UNION Coupon
Regular or Diet
Seven-Up Soda
One 2-Liter Btl.
(or 2 1/2 Liter Btl.)
69¢
No Minimum Purchase Required With This Coupon. Good Nov. 2 Thru Nov. 8. Limit One Coupon Per Customer.

Holly Farms - U.S.D.A. Grade 'A'
Fryer Drumsticks
or Whole Legs or Thighs
99¢
lb.

In Sauce
Campbell's Pork & Beans
3 99¢
1-lb. Cans

Super GRAND UNION Coupon
Colors or White - Quilted
Northern Bath Tissue
One Pkg. of 4 1320 Sheet Rolls
79¢
No Minimum Purchase Required With This Coupon. Good Nov. 2 Thru Nov. 8. Limit One Coupon Per Customer.

Frito Lay
Doritos Tortilla Chips
179¢
11-oz. Pkg.

Regular - Unsalted or Light - Quarters
Fleischmann's Margarine
99¢
1-lb. Pkg.

Super GRAND UNION Coupon
Assorted Flavors - All Natural
Dolly Madison Ice Cream
One Half Gall. Cont.
169¢
No Minimum Purchase Required With This Coupon. Good Nov. 2 Thru Nov. 8. Limit One Coupon Per Customer.

THE BUTCHER BLOCK **PRODUCE** **GROCERIES**

U.S.D.A. Choice - Boneless Beef
Top Round Roast
Also: Sirloin Tip or Round (Round)
179¢
lb.

Plume de Veau
Shoulder Veal Chops
Blade Bone
197¢
lb.

Fresh Crisp
Western Iceberg Lettuce
Head
69¢

Regular Chocolate Chip Cookies
Nabisco Chips Ahoy
18-oz. Pkg.
179¢

Gourmet - Assorted Varieties
9-Lives Cat Food
3 6-oz. Cans
89¢

Top Round **219¢**
U.S.D.A. Choice - Boneless Beef
Bottom Round **179¢**
U.S.D.A. Choice - Boneless Beef
Eye Round Steak **259¢**
U.S.D.A. Choice - Boneless Beef
Fresh Brisket **199¢**
U.S.D.A. Choice - Boneless Beef
Shoulder **179¢**
U.S.D.A. Choice - Boneless Beef
Shoulder for Stew **229¢**
U.S.D.A. Choice - Boneless Beef

Fresh Ducks **99¢**
lb.
Drumsticks Turkey **79¢**
lb.
Corned Beef **189¢**
lb.
Veal for Stew **249¢**
lb.
Plume de Veau - Fresh Boneless
WHOLESALE SAVINGS
Whole Tenderloin **399¢**
U.S.D.A. Choice - Boneless Beef 3 1/2 lbs. Untrimmed Cry-G-Knife
Custom Cut into: Hanger, Mignon, Steaks, Roasts

McIntosh Apples **69¢**
Sweet CRIP U.S. No. 1 2 1/2 Ma.
lb.
Grapefruit **3 89¢**
lb.
Fresh Broccoli **99¢**
lb.
Ribier Grapes **99¢**
lb.
Fresh Asparagus **299¢**
lb.
Persimmons **89¢**
lb.

Tomatoes Contadina **69¢**
Crushed - or Tomato Puree (29-oz.)
28-oz. Can
Heinz Gravy **69¢**
Assorted Homestyle Varieties
Progresso Soup **99¢**
Assorted Chicken Varieties
Rotini San Giorgio **69¢**
A Mouthful of Italy or Cut of Italy
15-oz. Pkg.
Prego Al Fresco **149¢**
Assorted Italian Assorted Varieties
Grape Juice **149¢**
Waltham - Purple or White
40-oz. Btl.

Downy Fabric Softener **199¢**
lb.
Lysol Spray **139¢**
Assorted Varieties
Dog Food **4 100¢**
Assorted Varieties
Coke or Diet Coke **199¢**
Assorted Varieties
C&C Cola 6-Pack **99¢**
Assorted Varieties
Canada Dry **99¢**
Assorted Varieties

THE CORNER DELI
IN STORES WITH SERVICE DELI
Turkey Breast **119¢**
lb.
Baked Ham **129¢**
lb.
Bologna Schickhaus **129¢**
lb.
Chicken Wings **299¢**
lb.

Orange Juice **99¢**
lb.
Vegetables **99¢**
lb.
Ellio's Pizza **159¢**
lb.
Budget Gourmet **149¢**
lb.

THE BIG FREEZER
Layer Cakes **199¢**
lb.
Waffles Downyflake **79¢**
lb.
Kraft La Creme **119¢**
lb.
Apple Pie **149¢**
lb.

DATE-LINE DAIRY
Cottage Cheese **99¢**
lb.
Butter Hotel Bar **199¢**
lb.
Yogurt **2 99¢**
lb.
Borden's Singles **169¢**
lb.

HOME & FAMILY
Colgate Toothpaste **119¢**
lb.
Flex Shampoo **149¢**
lb.
Vicks Nyquil **269¢**
lb.
Listerine Mouthwash **269¢**
lb.

NATURAL BEEF!
It's now available at Grand Union.
And it's USDA Choice.
Look for the Natural Beef Label. It tells the story.

GRAND UNION Coupon
20¢ Off
With This Coupon And Purchase Of One 1-lb. Pkg. of M&M's or Milky Way
M&M's or Milky Way 6-Pack
Coupon Good Nov. 2 Thru Nov. 8. Limit One Coupon Per Customer.

GRAND UNION Coupon
20¢ Off
With This Coupon And Purchase Of One Pkg. of 6 - Twix, Caramel or Peanut Butter Cookie Bar, M&M's, Snickers, 3 Musketeers or Kit Kat
M&M's or Milky Way 6-Pack
Coupon Good Nov. 2 Thru Nov. 8. Limit One Coupon Per Customer.

GRAND UNION Coupon
35¢ Off
With This Coupon And Purchase Of One Half Gall. Cont. of Tropicana Pure Premium
Tropicana Pure Premium
Coupon Good Nov. 2 Thru Nov. 8. Limit One Coupon Per Customer.

354 Main Street, Belleville;
505 Allwood Rd., Clifton;
710 Bloomfield Ave., Glen Ridge

OPEN 24 HOURS **MOST GRAND UNIONS ARE OPEN 24 HOURS** **Only The Best Always For Less.** **GRAND UNION**
CHECK YOUR LOCAL GRAND UNION WINDOW SIGNS FOR EXACT STORE HOURS.
Not Responsible For Typographical Errors. We Reserve The Right To Limit Quantities For Store Information. Call Toll Free, 1-800-221-1835.
Prices and Offers Effective Sunday, Nov. 2 thru Saturday, Nov. 8, 1986.

Belleville Times SPORTS

Mike Lambert's

Buc Shots

It was without question a great game. Last Saturday afternoon, the Belleville Bucs and Passaic Indians renewed an already intense rivalry with another hard hitting, defensive minded contest that went down to the wire.

For the record, Passaic recorded a 14-9 victory, scoring the winning touchdown in the final 10 to prevent Belleville from recording what would have been a huge victory.

Sometimes, the Bucs are still very much in the conference race. Belleville, Passaic, Clifton and Montclair are in a four way tie for first place in the NNJHL with 11 records. Nutley is 2-2 in the conference. Eastside, 1-3 and Kennedy and Bloomfield are 0-4-1.

This weekend, the Bucs will take their bag of tricks on the road, battling a powerful Clifton team. The Mustangs are 5-1 on the season and possess an excellent pass offense. Recently, the Mustangs added a new runner to their backfield and Buc coach John Senesky feels that Clifton will provide Belleville its toughest test to date.

Anyway, getting back to last Saturday's game, if you're a fan of good high school football, you have to admit that this game was special. Almost anytime, Belleville and Passaic play it essentially a big game. Last week, we reviewed some of the big games from the past and when the 1986 game is analyzed in the long run, it will go down as one of the best.

If you're a Belleville fan, the only bad thing about this game was the final score. The Buccaners played outstanding. The team fell behind in the second quarter when Passaic intercepted an errant Belleville toss and returned it for a TD.

The Indians held the 7-0 lead until the fourth quarter, when the Bucs made a spirited comeback. After the Passaic quarterback, Jason Hawes, stepped out of the end zone for a safety, the Bucs went ahead a few minutes later when quarterback/Left Spillsbury threw a shovel pass to Jim Dunphy, who faked past the Indian secondary for the go ahead tally.

You can't say enough about the game Dunphy played. The senior running back and defensive safety was all over the field. On offense, he ran well and caught passes out of the backfield. On defense, he intercepted two passes. He did all this on a bad knee, one that has kept him down a bit. However, he will not give anything except his best and his best is something else, injured or not.

Lou Lucante did a nice job returning punts and Jay Marchese played another steady game. The Buccaners defensive line, paced by Gerard Corbo, chased the Passaic quarterback throughout the game and limited the normally potent Indian running game.

The Belleville defensive secondary provided stiff coverage on the talented Indian receivers. The final drive of the day for Passaic was a study in excellent passing and catching. You couldn't blame the Buccaners' defenders; they covered the receivers as close as possible.

It was an excellent game. Even the officials commented afterward that it was one of the best games they had seen in a long time. It had a little bit of everything and certainly, it had excitement. Belleville might have lost this game on the scoreboard, but we learned a lot about the young men who wear the blue and gold in 1986. These kids never give up. They battled hard, regained the lead in the fourth quarter and played a stellar defensive game against one of the better teams in the area.

When Passaic warmed up before the game, its players chanted "war". It certainly was that, but it was between players who competed hard and earned each others respect by the second half. It was what high school athletics stand for.

Clifton Is a Big Rival, Too

Although the rivalry was just renewed in 1982, the Bucs and Mustangs have played some good games. In '82, Belleville won big, 35-0 over a young Mustang team. Two years later, Clifton belted one of the better teams in the area and took an unbeaten record into the Belleville game. The Bucs won, 7-3, one week after beating Passaic, 7-0. That win propelled Belleville into the 84 state playoffs. Last season, Clifton returned the favor with a 6-0 win at Belleville, scoring the TD late in the fourth quarter.

This season, we'll get a good look at the Mustang's talented quarterback, Bill Shaughnessy. He is a junior and directs a very talented offense that averages over 24 points a game. Clifton's only loss came to Montclair by a 21-14 count two weeks ago. This should be quite a test for the improving Bucs.

Athlete of the Week

Jim Dunphy of the football team. As mentioned earlier, he played an excellent all around game.

Gymnastics

The Belleville gymnastics team turned in an excellent performance at the NNJHL championships. The team finished with a score of 90.45 and were paced by the outstanding performance of Kelli Glunk. The senior finished second overall in the conference. She won the balance beam event and was second in floor exercise and third on the uneven parallel bars. Excellent performances were also turned in by Nicole Zelba, Joell Veltre and Afise Davies.

Congratulations to coach Ray Iannuzzi and his entire program for an excellent performance.

Last Weeks Quiz

The St. Louis Cardinals and Philadelphia Phillies have won two N.L. East crowns; the Los Angeles Dodgers have won three N.L. West crowns and Houston has captured two. In the American League, the Yankees have won two titles in the east while Kansas City has won three championships in the west and California has two titles.

For This Week

When Penn State won its national championship in 1983, who did it defeat in the bowl game and which bowl game was that?

Passaic squeaks by Belleville, 14-9

By Mike Lambert

If Passaic High School goes on to win another Group IV Section 1 football championship next month, it could very well look back to the game played on November 1, 1986 at Municipal Stadium in Belleville as the turning point of its season.

For those of you who missed it, Passaic defeated Belleville 14-9, scoring the winning touchdown in the last 10 of regulation time. The victory boosted the Indians record to 5-1 (3-1 in the NNJHL) and stopped Belleville's winning streak at three games. The Bucs are now 3-3 (1-1 in the conference).

Belleville will have little time to dwell on the setback. The Bucs hit the road this weekend to battle powerful Clifton High. Game time is 1:30 p.m. The Mustangs will come in with a 5-1 record and a high powered offense that is scoring well over 24 points a game.

We're in a state of shock, both the players and coaches," said head coach John Senesky.

Last weekend, "This is a tough loss to get over. However, as we prepare for Clifton during the week, we'll ease off this loss. It was a great game, the kids played hard. I can't say more about our effort."

Senesky was right, this was a great game. Without a doubt, it has to be one of Belleville's toughest losses, comparing with the 3-0 loss to Bergen Catholic in 1985, the 15-12 loss to Union in the 79 playoffs and the 20-14 setback to Ridgewood in '83.

What was so tough about this loss was that we had the lead coming down the stretch," Senesky said. "In that Bergen Catholic game, we never led. The Ridgewood game was similar where we had a lead, 14-12, late in the game and let it get away."

Credit has to be given to Passaic quarterback Jason Hawes. The senior was tremendous in the winning rally, driving his team 80 yards in a little over two minutes to gain the victory. It was the only established drive Passaic could mount on a Buc-

caner defense that dominated the afternoon proceedings.

The first half, as expected, was a defensive struggle. Belleville had the only sustained drive, moving from the 50 to the Indian 9 in the first quarter.

Following an Indian punt that put the ball at mid field, Jim Dunphy gained five yards on a handoff to the 45. Two plays later, Passaic was cited for a pass interference penalty, giving the Bucs a first down at the Indian 30. Fullback John View gained six yards to the 24 after an incomplete pass that looked very much like a second inter-

ference call. Dunphy gained two yards to the 22. Quarterback Jeff Spillsbury hit Jamie Galotti with a ten yard strike to the 12 and View gained three more to the 9. However, the Bucs could move no closer, with a holding penalty and a fumble moving the ball back to the 35. Dorian Hogan then intercepted a Spillsbury pass to end the threat.

Late in the first half, Dunphy collected the first of his two interceptions, giving the Bucs a

first down at their 40. Spillsbury was sacked for a 15 yard loss on first down and after Frank Montagna was stopped for a two yard loss, the Bucs attempted an option pass which spelled disaster. The ball was tipped and Passaic defender John Simes grabbed the errant throw and ran 23 yards for the first score of the day. The conversion good, Passaic led, 7-0 at halftime.

While Belleville had dominated the first half, it trailed at intermission and the players knew they would have to regroup.

The Bucs did that in the second half, playing strong defense. Meanwhile, the Buccaners offense was prepared to get back into the game. Belleville received the second half kickoff and started from its 25. After two plays, mounted just three yards, Spillsbury found Jay Marchese with a 12 yard pass for a first down at the 40. Spillsbury went back to the air for two more completions, hitting Al Best for an 11 yard gain and Galotti with a 15 yard toss. The catch by Galotti was a tremendous grab. On the play, the referee noted pass interference on Passaic, but the senior receiver caught the ball nonetheless.

After Spillsbury was sacked for an eight yard loss, Dunphy took a handoff and almost broke loose for a touchdown. Only his momentum slowed him down and he was stopped at the 33 after a nine yard gain. The drive moved to the 30 before it stalled.

The Bucs got on the board in the fourth quarter. Hawes, on a third down play on the Passaic seven, stepped out of the end zone to avoid a strong Belleville rush. The safety cut the Indian lead to 7-7.

Belleville appeared to have the momentum following the safety, but fumbled the ensuing punt, giving Passaic the ball on its 40. One play later, Simes fumbled the ball and Lou Lucante picked it up and raced to the Passaic 22.

With a golden opportunity to score, Belleville wasted little time. After a five yard penalty and an incomplete pass, Dunphy took a shovel pass from Spillsbury, and raced 27 yards for the go ahead score. It was the second shovel pass that Spillsbury had completed in the game and gave Belleville an 8-7 lead. Dave McNeil added the conversion and the Bucs had a 9-7 advantage before a vocal and supportive crowd.

However, it wasn't meant to be. On its final drive, Passaic moved from its 20 with Hawes hitting crucial passes despite a strong Belleville rush. His hit Mark Du Pree with a ten yard pass. On a third and ten situation, he found Richard Lowe for 24 yards to the Indian 45. Hawes hit Du Pree with another pass, this time for 17 yards to the Buc 38. On another critical third down pass from the Buc 33, Hawes hit Robert Holmes for 8 yards and a first down at the 25. From there, Hawes found Du Pree for 18 yards to the 7 and Holmes for six yards to the 1. With just 12 showing on the clock, Hawes threw a sideline strike that Du Pree hauled in for the winning score, giving the Indians a hard earned victory.

Their receivers made some great catches down the stretch," Senesky said. "We had number 22 (Du Pree) doubled teamed and he still caught the ball. Our coverage was good, but their quarterback and the receivers made some great plays."

There were many Buccaners heroes in this game as well, but without a doubt, Dunphy played a simply tremendous game. Running on a sore knee, the senior co-captain intercepted two passes and did a good in rushing and pass receiving.

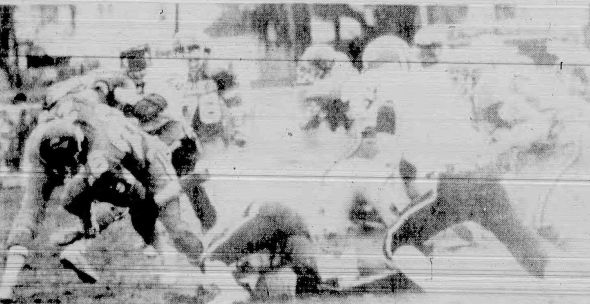
"Dunphy played a great game," Senesky said. "His knee is bothering him, but he just comes after you. The guy never quits. Our entire team played well. We came back strong and did a good job. I'm very proud of this team."

As well you should be, coach. It was, after all, a great game.



Tough battle, tough break...


Photos by Kathleen A. Accardo



Cross-country Bucs get results

Their record is 10-4-3

Soccer Bucs enter states



Collector Guns
Buy — Sell — Trade

338 Washington Ave
Belleville N.J. 07109

The loss to Montclair was preceded by a win again a rejuvenated Passaic team. The 4-1 win saw four different players find the net. Capozzucca, Tom Morris, Nick Keykuran and Keith Woods all found the net as Goldrick only had to make three saves all afternoon.

Chamber of Commerce
10K Run
Winner's circle

Age Group Winners:
1st prize, trophy; 2nd prize, silver medal, 3rd, bronze medal

- | | |
|------------------------------------|-----------------------------------|
| 14 Under | 2nd. Steve Van Dyk, Newark |
| 1st. Ryan Sevier, Kearny | 3rd. Robert Taylor, Kearny |
| 15-19 Burden | 30-39 Female |
| 1st. Craig Burden, Belleville | 1st. Donna Taylor, Kearny |
| 2nd. Robert Hutchinson, Belleville | 40-49 Male |
| 3rd. Joseph LaFons, Belleville | 1st. George McIntire, Verona |
| 15-19 Female | 2nd. John Righi, Saddle Brook |
| 1st. Laura DeCotis, Nutley | 40-49 Female |
| 2nd. Jose Luongo, Belleville | 1st. Maria Roy, Belleville |
| 20-29 Male | 50-59 Male |
| 1st. Mitch Barnes, Newark | 1st. Alan Cohen, Blairstown, N.J. |
| 2nd. Cesar Torres, Newark | 2nd. Maria Ferguson, Newark |
| 30-39 Male | Arduous |
| 1st. Charles Slaughter, Bloomfield | |

Fun Run Winners (1 mile)

- Age group 8 - 9 years
1st Anthony Frantantoni, Belleville
2nd Billy Ryan, Bloomfield
3rd Alana Ng, Bloomfield
Age group 10 - 11 years
1st Jonas Ng, Bloomfield
2nd Suzanne Sprock, Belleville
3rd Jacqueline Valle, Newark
Age group 12 - 13 years
1st David Boyce, Belleville
2nd Rose Guzman, Belleville
3rd Johanna Santos, Belleville

Volunteers

The Chamber of Commerce would like to thank: The Belleville Police Dept., Chief George Foster and Capt. Al Koelsch who was in charge and the police officers, Essex County Sheriff, Tom D'Alessio and deputies, Capt. Donald Smith, Lt. Patrick Giordano and officer of Essex County.

Also the Junior Women's Club of Belleville for the volunteers Sister Paul of St. Peter's School and Mrs. Arndt and Mr. Spitzcock of St. Peter's Sport Assn.

Also the 10K race committee: Howard Halpern, chairman, Shirlee Sherman, Bill Diggs, Rita Trous, Tom Spillane, Mary Perry and Viola Narucki. Also all the volunteers who worked with the race committee.

Contributors:


Nan Dyk & J. Nutley Savings & Loan Assn., First Jersey Nat'l Bank, First DeWitt Savings & Loan, Wallace & Lerner, Orchard Publications Inc., Pressure Control Inc., Pro Lumber Hardware, Modern Millwork & Supply Co., All-Phase Employment Service Inc., Gaccione Pomarico & Beck, Charles Gender & Co., Montell Agency, Peoples Bank, B & M Machine Co., New Jersey Bell, Fran's Dry Cleaners, Cofone Plumbing.

Also: Trust Insurance Agency, Charles Jewelers, Pathmark, Personal Fitness of Belleville, Personal Fitness of Nutley, New Jersey Runner, Flemings Food Service, Milts Photo, Joyal Card and Gift Shoppe, Provident Savings Bank, Frankies Ficks, Belleville Tea Party.

201-750-3908 Licensed Dealer


BULLET HOLE

Guns Ammo Repairing Shooting Equipment

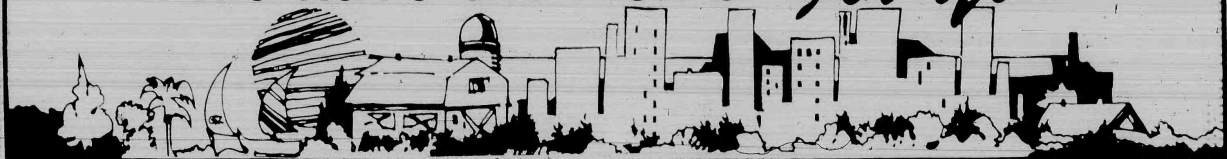


Collector Guns
Buy — Sell — Trade

338 Washington Ave.
Belleville N.J. 07109

 Send Inquiries To
Dentally Speaking
671 Franklin Avenue
Nutley, N.J. 07110
667-4421

—We have the Home For You—



Real Estate Briefcase

By Jack Reilly, G.R.I.

Dear Mr. Reilly:

Mortgages today are confusing, and I don't understand what points are or why banks have to charge them. Can you explain them for me? — A. Graffeo, Belleville

You are absolutely correct — mortgage financing today is confusing in contrast to the mortgage programs of yesterday. "Points" have become a permanent fixture on the home-financing landscape, and despite any hoopla which may surround them, points are really quite simple to understand. Perhaps the thing which is most confusing is the terminology itself. The term "points" lends itself to sounding lofty, sophisticated, and mysterious. This is no accident, as the banks have been in the word play game for a long time. For instance, in bank talk one does not "make a profit," rather, one would "show a yield." Well the same follows suit for points. Just place the word points with the word percent and you've got the answer. Three points therefore translate into three percent of whatever loan amount you are borrowing. Simple.

Now that we've seen what points are let's look at why they are charged. Again, the answer is quite simple, they increase the yield (profit) of the loan. Points represent interest on the loan, only the bank doesn't wait for it to come with the regular monthly payments. They take the interest up front in cash on the day that the loan is given. For instance, a person who borrows \$100,000 and is charged three points will pay the bank \$3,000 cash upon receiving the loan.

This way, before the loan is even an hour old, the bank has already realized a three percent profit on it. In most cases, the points charged are fully deductible as interest on your mortgage. Check with your accountant or tax advisor.

"Different lending institutions will offer different rates and different points, depending on the policies of the institution. One must be careful not to get sold strictly on low rates or low points. The combination of all loan factors, i.e. rate, points, application fee, term, etc., must be carefully weighed to make the proper decision in choosing which loan is best for you.

Real Estate Briefcase is a weekly column which will be glad to respond to topics suggested by readers. Please address correspondence to Real Estate Briefcase, c/o this paper, Jack Reilly is a broker with Reilly Realtors in Belleville.



Jack Reilly

Permanent All-Weather Wood Foundations: A Viable Alternative

For today's builder permanent all-weather wood foundation systems have become a viable alternative to traditional masonry foundations. Home buyer satisfaction and design and construction versatility have convinced many developers to incorporate wood foundation systems into their new residential projects.

Wayne Karnell, president of the New Jersey Home Owners Warranty Corp. of New Jersey, notes that a wood foundation is nothing new. "In fact," he explained, "the systems have been time tested and have gained acceptance from major national model building code groups, federal finance agencies, lending and fire insurance institutions. Wood foundations are proven structural systems, capable of performing the same design function of masonry foundation systems."

Consumer Satisfaction and Savings

The word "basement" often brings to mind a picture of a cellar with little warmth and cheer. One of the prime attractions of a permanent wood foundation is comfort. Wood foundation basements have all the livability of the above ground rooms, taking advantage of every square inch of living space of the home.

Also, there are considerable savings that come with wood foundations. The wood framing allows

for easy installation of thick, economic batt-type insulation. Heat loss through the walls is less, and long term savings is greater.

Site Preparation Important

A wood foundation system is relatively easy to build. As with all foundation systems, site preparation is an important step. With a wood foundation, extra care must be taken in providing a smooth level footing bed on gravel below the frost line. Under the footing areas the gravel bed must be at least six inches deep and twice the width of the footing plate.

Karnell noted that effective drainage is a key factor when constructing all-weather wood foundations. Drainage can be provided via the installation of sump pumps and/or perimeter drains under wood or concrete slabs on grade floor systems.

Pressure Treated Wood Vital

There are no concrete footings with a true all-wood foundation. For example, all that is needed is a simple 4" x 8" flat on the ground when a wood foundation will be used. Of course, all the structural and physical factors which are used in concrete foundations must be pressure treated to specific American Wood Preservative Assn. Standards.

A wood foundation wall is constructed much the same way as an

above-grade wood frame exterior wall. The major differences being the use of larger dimensional material and pressure treated plywood and lumber.

Finishing, Remodeling Easier

Permanent wood foundations are also easier to finish inside because the nailable studs are already in place. Plumbing and wiring are also simplified and concealed. Remodeling is easier

because window or door openings can be easily cut out.

Cost and durability appear to be the two major questions that builders have regarding the construction of wood foundation systems as an alternative to masonry foundations. The cost comparison will depend on such factors as price and availability of materials, production scheduling and quality control, etc.

SALES

Nutley - New Listing
Garden School - 4 Bedroom Colonial on a cul de sac \$196,000

Nutley - Luxury Condo
3 Bedrooms - just reduced - must sell - \$161,900

Belleville - New Listing
Mod 2 family, 20 years old - 6 over 5 - \$249,900

Belleville - Tudor
4 Bedrooms, immaculate home in top area, marble fireplace, formal D.R. must be seen - \$229,900

RENTALS

Belleville - 5 1/2 rms 2nd fl with heat \$625

4 rms - 2nd fl \$500 plus util

6 rms - 2nd fl \$550 plus heat

5 rms - 2nd fl \$575 plus heat

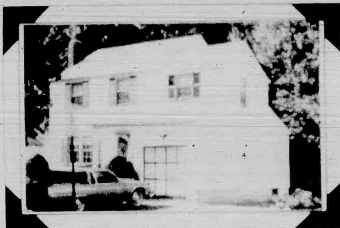
Bloomfield - 3 rms - 2nd fl with heat - \$550

3 1/2 rms - 1st fl \$500 plus heat

De Piro Realtors

85 Franklin Avenue
Nutley, N.J. 07110
667-0006

ANOTHER DeCARLO SALE!



This Brookdale Park Colonial at 27 Aldon Terrace was recently listed and sold by our office

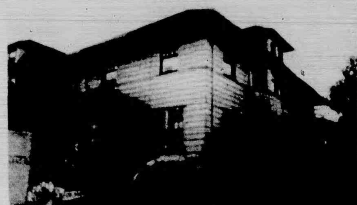
ANN DeCARLO
880 BROAD STREET, BLOOMFIELD, NJ
748-5288

Members of Bloomfield, Glen Ridge, Nutley, Belleville, Montclair & West Essex Board of Realtors

AGENCY
REALTOR



BLOOMFIELD FOR SALE



SPACIOUS DUPLEX

Six large rooms each side, 2 heating units, double garage, like living in a one family home, yet getting income from one side

MARGIE McDONALD
Realtor

316 Broad St., Bloomfield
429-7372

490 YEARS In Business !!

Dog years, that is. Still, 70 people years is something to bark about. And our breed of experience is in short supply. So when you're ready to sniff out some Real Estate, we'll get you out of the dog house. Man's Best Friend:

REILLY REALTORS

759-1682

Now Interviewing For Career Positions



THE RESULTS PEOPLE.
BAUMGARDNER AGENCY



BLOOMFIELD BROOKDALE

3 bdrm Colonial located within steps of N.Y. transportation and St. Thomas School. This lovely home has a rear sun deck, mod kitchen w/ greenhouse window and breakfast area. Affordable at \$179,900.

Covering

Bloomfield - Glen Ridge - Nutley - Belleville

378 Broad Street, Bloomfield, N.J.

743-8382

Century 21
HOMES R US

Put Number 1 to work for you.



"3 FAMILY"

BELLEVILLE - Just Listed - Maintenance Free - 3 Family Features: 5 1/2 & 4 modern room apts plus finished basement, 3 car driveway - \$1750 current mo income Asking \$206,000 Call

Each office is independently owned and operated. Equal housing opportunity.

Find out how much your home is worth call today for a free market analysis!

Visibility
Opens
the Door
to Sales

Advertise your
listing here!

Don't miss out.
Space is limited!

Call:

667-2700

The Nutley Sun
Belleville Times
Bloomfield Life

—We have the Home For You—

180 Centre St.
Nutley, N.J. 07110
667-3440

GEORGE E. MACMUNN CO.

REALTORS

100 Woodport Road
Sparta, N.J. 07871
729-8727



JUST LISTED - NUTLEY - Custom built: 4 bedrooms, 2 full baths, big Liv. Rm. Din. Rm. encl. rear porch. 54x144 landscaped lot. ASKING \$184,900



OPEN HOUSE - SUNDAY 1-4PM - 86 Croevman Ave., Nutley (off Blvd. Ave.) beautifully decorated. 3 BR's, 2 full baths, frpl., big kitchen, Jr. Din. Rm. ASKING \$184,900

**DO YOU KNOW
WHAT YOUR
HOUSE IS
WORTH
TODAY?**

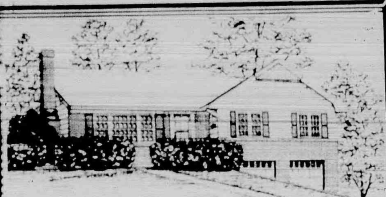
We offer a current market
Value analysis ...
Just pick up the phone & call



JUST LISTED - LAKE MOHAWK on over an acre of property w/magnificent views. Imagine 4 BR's, formal DR., Fam. Rm. off kitchen w/see thru frpl. to Liv. Rm. on 1 floor + att. garage & game rm. for kids lower level. ASKING \$259,900.



LAKE MOHAWK - Across from lake w/beautiful views, 3 bedrooms, frpl., formal Din. Rm., lovely deck & much more. ASKING \$129,500.



Montclair/Upper

TRANQUILITY

An ideal respite from the pressures and hassles of today's world exists in this easily maintained brick and frame Colonial Ranch, located on a choice Upper Montclair street. All of the improvements and embellishments have already been provided by the present owners, whose discriminating tastes and talents have created a comfortable and attractively decorated home. A living room with fireplace-dining room, eat-in kitchen, family room, three bedrooms and two full baths are ready and waiting for you. \$329,000.

SOUTHERN REALTY
628 Valley Road
Upper Montclair - 746-5811



Multiple Listing Service, Member of National Board of Realtors, Member of N.J.A.R., N.J.A.R. of Bloomfield, Glen Ridge, Nutley and Belleville, and New Jersey Board of REALTORS.

Century 21

AWARD AGENCY

BUYING? ... SELLING?
"PUT NUMBER 1 TO WORK FOR YOU"

SERVING

- BLOOMFIELD • BELLEVILLE
- NUTLEY • GLEN RIDGE

FREE MARKET ANALYSIS

CALL

661-3808

152 FRANKLIN AVE - NUTLEY

EACH OFFICE IS INDEPENDENTLY OWNED AND OPERATED



JUST LISTED!

Brookdale Split Level - LR, DR, eat in kitchen, 3 bdms. with a possibility of 4, two baths and more! Realistically priced at \$215,000. Don't let this one slip by!

SUBURBAN

REALTY & INSURANCE CO. INC.

REALTORS

748-9090

Century 21 **WAYNE K. THOMAS**
REALTORS



SPACIOUS

Large Colonial - LR w fireplace, DR, EIK, 3 lg @rms, sun porch. Fin. pine bsmt w bar on corner lot.

277 Broad Street Bloomfield, New Jersey
(201) 429-7400

Each office independently owned and operated
MEMBER OF BLOOMFIELD GLEN RIDGE
NUTLEY, BELLEVILLE BOARD OF REALTORS

<p>BLOOMFIELD Brookdale Ranch - 6 rooms, 1 1/2 baths, lg garage. Reduced \$150,000.</p>	<p>BLOOMFIELD 2 family, living rm w frpl, den, lg bedroom, tile kitchen & bath plus 3 room apt. Priced for quick sale. \$139,900.</p>
<p>BLOOMFIELD Whitstone Colonial - 21 living rm w balcony, dining room, modern kitchen, tile bath, lg bedroom. Wholesale price starting at \$97,000.</p>	<p>BLOOMFIELD Colonial, Vacant 6 rooms - modern kitchen, modern bath, new 220 electric, new wall to wall carpeting thru-out, newly painted. Reduced \$134,900.</p>

TO INSPECT CALL

Arthur L. Grutt Realtor

GLENWOOD

Real Estate Agency

429-7380

905 BROAD ST., BLOOMFIELD

<p>Belleville - Colonial 7 rooms - featuring living room with fireplace - large modern kitchen, finished basement, plenty of closet space. Offered at \$169,900.</p> <p>Belleville - 2 Family Ideal for first time or small investors - two four room apartments - separate utilities - all brick - Silver Lake section - Only \$114,900.</p> <p>Belleville - Colonial Six rooms - aluminum sided - living room with fireplace - modern kitchen and bath - Immediate possession - gas heat - Two car garage - Priced at \$169,900.</p> <p>Belleville - Exclusive Colonial 24 year old home - featuring large eat in kitchen - large bedrooms - oak floors - mint condition - in-ground pool - Asking \$169,900.</p> <p>Kearny - Starter 4 1/2 rooms - 2 duplex - modern bath - exterior brick & vinyl - gas heat - Offered at \$129,900.</p> <p>Business Opportunities Liquor Store - yearly gross over \$70,000 - Offered at \$375,000 - plus \$5 for stock. Call for further details. Italian Specialty Store - pork products - grocery - Asking \$65,000.</p>	<p>Nutley - Condos Townhouse style - full six rooms - 2 full baths - cathedral ceilings - sky lights - terrace - wicker blinds - mirrored closet doors - all major appliances included - Priced to sell at \$175,000.</p> <p>Nutley - Bi-level 14 year old home - with 2 1/2 baths - 8 rooms - 4 bedrooms - gas heat - central air - above ground pool - patio and more - Asking \$238,000.</p> <p>Clifton - Starter Colonial - 3 rooms - large eat in kitchen, modern bath - completely renovated four years ago - new furnace, roof and siding - Offered at \$124,900.</p> <p>Preferred Rentals Nutley 3 rooms - \$625 H&H w incl. Lynd 3 rooms - \$550 - all util incl. Belle 5 rooms - \$575 - plus util. Belle 5 rooms - \$550 - plus util. N. Arlington 5 rooms - \$700 H&H w incl.</p>
--	---

COSTANTINE REALTY

280 Franklin Avenue, Nutley

667-7070

Member - Bloomfield, Nutley, Glen Ridge & Belleville Board of Realtors
Member - of Northern New Jersey - M.L.S. (Passaic County)

SHERIFF'S SALE
SUPERIOR COURT OF NEW JERSEY
CHANCERY DIVISION, ESSEX COUNTY
DOCKET NO. FD 2754-86 MAURO A.
MARINATA PLAINTIFF vs. RENATO CESARE
and EUNICE CESARE his wife, DEFENDANTS
Execution for Sale of Mortgaged Premises

By virtue of the above stated writ of Execution to me directed, I shall expose for sale by Public Auction in SHERIFF'S OFFICE, Essex County Court Building in Newark, on Tuesday, the 2nd day of December next, at one-thirty P.M. (preceding time) all the following tracts or parcels of land and the premises hereinafter particularly described, situate, lying and being in the CITY OF EAST ORANGE, in the COUNTY OF ESSEX and STATE OF NEW JERSEY:

FIRST TRACT
BEGINNING in the southerly line of Grove Street at the corner formed by the intersection of said southerly line of Grove Street with the southerly line of Grove Place (11) along said southerly line of Grove Place South 57 degrees 55 minutes East 40 feet; thence (2) North 32 degrees 1 minute East 107.21 feet; thence (3) North 66 degrees 59 minutes West 79.93 feet to the said southerly line of Grove Street; thence (4) along the same South 9 degrees 18 minutes West 99.68 feet to the said southerly line of Grove Place and the point and place of BEGINNING.

SECOND TRACT
BEGINNING at a point the southerly side of City Hall Plaza distant 57.10 feet from the intersection of the said southerly line of City Hall Plaza with the easterly side line of Winslow Street; and thence (1) North 36 degrees 14 minutes 30 seconds East 164.67 feet; thence (2) South 53 degrees 41 minutes 30 seconds East 30 feet; thence (3) South 36 degrees 14 minutes 30 seconds West 163.32 feet; thence (4) North 53 degrees 53 minutes 13 seconds West 30.04 feet to the point and place of BEGINNING.

BEING commonly known as #70 City Hall Plaza, East Orange, New Jersey Tax Map Block 373 lot 18 AND ALSO:
THIRD TRACT
BEGINNING in the southerly line of Grove Place at a point distant 76.15 feet westerly from the westerly line of Greenwood Avenue; thence running (1) North 25 degrees 41 minutes East 91.12 feet; thence running (2) North 61 degrees 54 minutes West 250 feet; thence running (3) North 28 degrees 49 minutes East 292 feet; thence running (4) North 57 degrees 18 minutes West 20.57 feet; thence running (5) South 30 degrees 40 minutes West 93.40 feet to the said southerly line of Grove Place at a point distant westerly 31 feet from the place of BEGINNING; and thence (6) along the same South 57 degrees 58 minutes East 31 feet to the place of BEGINNING.

BEING known and designated as #10 Grove Place, East Orange, New Jersey Tax Map Block 170 lot 18
AND ALSO:
FOURTH TRACT
BEGINNING at the point of intersection of the southerly line of Winslow Street and the southerly line of City Hall Plaza (commonly known as Main Street); thence running (1) along the said southerly line of City Hall Plaza South 44 degrees 38 minutes 50 seconds East 24.52 feet to an angle point on said line; thence (2) still running along said line South 56 degrees 53 minutes 13 seconds East 72.38 feet to a point; thence (3) North 36 degrees 14 minutes 30 seconds East 1.20 feet to a point; thence (4) North 53 degrees 53 minutes 13 seconds West 82.85 feet to a point in the southerly line of Winslow Street; thence (5) along the said line of Winslow Street South 45 degrees 02 minutes 00 seconds West 90.73 feet to the point and place of BEGINNING.

BEING commonly known and designated as #70-80 City Hall Plaza, East Orange, New Jersey Tax Map Block 373 lot 31
A DEPOSIT OF 20% OF THE BID PRICE IN CASH OR CERTIFIED FUNDS IS REQUIRED AT THE TIME OF SALE.

The approximate amount of the judgment to be satisfied by said sale is the sum of ONE MILLION ONE HUNDRED FORTY ONE THOUSAND SIX HUNDRED TWENTY SEVEN DOLLARS AND FORTY THREE CENTS, \$1,141,687.43; together with the costs of this sale.

The Sheriff reserves the right to adjourn the sale from time to time as provided by law.

At Newark, N.J. October 27, 1986
THOMAS J. D'ALESSIO, Sheriff
CONNARELLA & GANN, Attorneys
Belleville Times
Nov. 6, 13, 20, 27, 1986
Fee \$200.00

SHERIFF'S SALE
SUPERIOR COURT OF NEW JERSEY
CHANCERY DIVISION, ESSEX COUNTY
DOCKET NO. J-7280-85 TALMAN HOME FEDERAL SAVINGS & LOAN ASSOCIATION PLAINTIFF vs. JOHNNIE ROBINSON, et al. DEFENDANTS
Execution for Sale of Mortgaged Premises

By virtue of the above stated writ of Execution to me directed, I shall expose for sale by Public Auction in SHERIFF'S OFFICE, Essex County Court Building in Newark, on Tuesday, the 2nd day of December next, at one-thirty P.M. (preceding time) the following tract or parcels of land and the premises hereinafter particularly described, situate, lying and being in the County of Essex and State of New Jersey:

TRACT 1A
Tax Map Block 170, lot 18
Tax Lot and Block 170, lot 18 on the Tax Map.
Approximate dimensions: 50 feet x 12 feet. Nearest cross street, Greenwood Avenue.
A full legal description of the above tract is on file in the Office of the Register of Deeds, Essex County, at the County Clerk's Office.
A DEPOSIT OF 20% OF THE BID PRICE IN CASH OR CERTIFIED FUNDS IS REQUIRED AT THE TIME OF SALE.

The approximate amount of the judgment to be satisfied by said sale is the sum of FORTY-THREE THOUSAND NINE HUNDRED FORTY-FOUR DOLLARS AND ONE CENT, \$43,944.01; together with the costs of this sale.

The Sheriff reserves the right to adjourn the sale from time to time as provided by law.

At Newark, N.J. October 27, 1986
THOMAS J. D'ALESSIO, Sheriff
ANN D. MILLER, Attorney
Belleville Times
Nov. 6, 13, 20, 27, 1986
Fee \$77.08

SHERIFF'S SALE
SUPERIOR COURT OF NEW JERSEY
CHANCERY DIVISION, ESSEX COUNTY
DOCKET NO. J-7294-86 THE FEDERAL NATIONAL MORTGAGE ASSOCIATION, a corporation, PLAINTIFF vs. JAMES LINDSEY GILMORE, et al. DEFENDANTS
Execution for Sale of Mortgaged Premises

By virtue of the above stated writ of Execution to me directed, I shall expose for sale by Public Auction in SHERIFF'S OFFICE, Essex County Court Building in Newark, on Tuesday, the 2nd day of December next, at one-thirty P.M. (preceding time) the following tract or parcels of land and the premises hereinafter particularly described, situate, lying and being in the County of Essex and State of New Jersey:

TRACT 1A
Tax Map Block 170, lot 18
Tax Lot and Block 170, lot 18 on the Tax Map.
Approximate dimensions: 50 feet x 12 feet. Nearest cross street, Greenwood Avenue.
A full legal description of the above tract is on file in the Office of the Register of Deeds, Essex County, at the County Clerk's Office.
A DEPOSIT OF 20% OF THE BID PRICE IN CASH OR CERTIFIED FUNDS IS REQUIRED AT THE TIME OF SALE.

THOMAS J. D'ALESSIO, Sheriff
ANN D. MILLER, Attorney
Belleville Times
Nov. 6, 13, 20, 27, 1986
Fee \$82.72

SHERIFF'S SALE
SUPERIOR COURT OF NEW JERSEY
CHANCERY DIVISION, ESSEX COUNTY
DOCKET NO. J-7294-86 THE FEDERAL NATIONAL MORTGAGE ASSOCIATION, a corporation, PLAINTIFF vs. JAMES LINDSEY GILMORE, et al. DEFENDANTS
Execution for Sale of Mortgaged Premises

By virtue of the above stated writ of Execution to me directed, I shall expose for sale by Public Auction in SHERIFF'S OFFICE, Essex County Court Building in Newark, on Tuesday, the 2nd day of December next, at one-thirty P.M. (preceding time) the following tract or parcels of land and the premises hereinafter particularly described, situate, lying and being in the County of Essex and State of New Jersey:

TRACT 1A
Tax Map Block 170, lot 18
Tax Lot and Block 170, lot 18 on the Tax Map.
Approximate dimensions: 50 feet x 12 feet. Nearest cross street, Greenwood Avenue.
A full legal description of the above tract is on file in the Office of the Register of Deeds, Essex County, at the County Clerk's Office.
A DEPOSIT OF 20% OF THE BID PRICE IN CASH OR CERTIFIED FUNDS IS REQUIRED AT THE TIME OF SALE.

THOMAS J. D'ALESSIO, Sheriff
ANN D. MILLER, Attorney
Belleville Times
Nov. 6, 13, 20, 27, 1986
Fee \$82.72

SHERIFF'S SALE
SUPERIOR COURT OF NEW JERSEY
CHANCERY DIVISION, ESSEX COUNTY
DOCKET NO. J-7294-86 THE FEDERAL NATIONAL MORTGAGE ASSOCIATION, a corporation, PLAINTIFF vs. JAMES LINDSEY GILMORE, et al. DEFENDANTS
Execution for Sale of Mortgaged Premises

By virtue of the above stated writ of Execution to me directed, I shall expose for sale by Public Auction in SHERIFF'S OFFICE, Essex County Court Building in Newark, on Tuesday, the 2nd day of December next, at one-thirty P.M. (preceding time) the following tract or parcels of land and the premises hereinafter particularly described, situate, lying and being in the County of Essex and State of New Jersey:

TRACT 1A
Tax Map Block 170, lot 18
Tax Lot and Block 170, lot 18 on the Tax Map.
Approximate dimensions: 50 feet x 12 feet. Nearest cross street, Greenwood Avenue.
A full legal description of the above tract is on file in the Office of the Register of Deeds, Essex County, at the County Clerk's Office.
A DEPOSIT OF 20% OF THE BID PRICE IN CASH OR CERTIFIED FUNDS IS REQUIRED AT THE TIME OF SALE.

Are you losing your cool this summer?

Were you too cool for comfort last winter?

THE CREAM

Qualifying low-income customers can obtain **FREE** Seal-Up Services!

The PSE&C Team wants to make your home more comfortable all year long.

Just call **1-800-854-4444** Toll FREE Monday through Friday, 9:00 AM to 5:00 PM.

Find out if you qualify for Public Service Electric and Gas Company's Low-Income Energy Conservation Services.

PSE&C

The Choice of the People

7 Days
24 Hours
Delicious
Salad Bar!
Italian
Specialties!
Steaks & Chops

All baking done on premises • Homemade pastries
Childrens Menu Available
Special Breakfast Menu 6:30 a.m.
Daily Businessman's Lunch 11 a.m. - 3 p.m. Salad Bar Open 11 a.m. - 10 p.m.
ALA CARTE and COMPLETE DINNER MENU

We're Always Open
WILLIE'S
DINER-RESTAURANT
9 State St., Bloomfield Call 748-7414

IMPORTANT NOTICE !

ONIUN TEXTILE CO.

32 Broad Street, Bloomfield, N.J.

is now carrying a line of CRAFT items for you the customer! (sequins, beads, straw & styrofoam wreaths, pompoms and much more!)

CORDUROY 45" \$1.50 a yd. 60" \$2.00 a yd.	100% WOOL & WOOL BLENDS 60" width Flared Tapered Herringbones & Solids 3.98 SOLID COTTONS ALL WIDTHS \$1.00
100% COTTON & COTTON BLENDS Linen \$1.50 Prints \$1.50 Stripes \$1.50 ALL WIDTH	

AT ALL TIMES - 20% Off All Notions & Craft Items

FEATURING A WEEKLY DRAWING
Winner Receives \$25.00 Worth of Merchandise

This week only (11/5/86 to 11/14/86)
20% OFF all patterns by Mc Call's & Butterick

NEW STORE HOURS
Monday & Friday 10 A.M. to 9 P.M.
Tuesday, Wednesday, Thursday 10 A.M. to 7 P.M.
Saturday 10 A.M. to 6 P.M. Sunday 12 A.M. to 5 P.M.

43A7 APARTMENT
UNFURNISHED

furn rms. \$575 all u
 incl.
 rms. \$625 incl heat.
 luxury rms. \$800 + ut
 rms. \$625 incl heat
 Office Space, 550 sq ft
 100 incl heat

AGENCY
667-7733
Eves Mario 667-8189

BELLEVILLE 1st
floor 4 rms, 2 bdms
util incl \$475. Call Auto
Ansler 667-0306

NUTLEY
3 rms, \$550 + util
3 rms, \$625 h&h/w inc
3 1/2 rms, \$650 h&h/w inc
4 1/2 rms, \$750 h&h/w inc
5 rms, \$775 all util inc
BELLEVILLE
4 rms, \$475 + util

4 rms. \$550 + util
6 rms. \$575 + util
5 rms. \$650 h&h w in
BLOOMFIELD
4 rms. \$585 h&h w in
5 rms. \$650 h&h w in
NO NEWARK
4 rms. \$350 + util

NO ARLINGTON
5-11118, \$700 b&h/w in
COSTANTINE
REALTY
Realtor 667
BELLEVILLE 2 B

BELLEVILLE-New spacious condo, 2 B, 1 bath, \$900, plus u. Call Century 21 Home Us. Ask for Ann 751-4

Belleville-5 rm Apt
ply own heat 2 fa

BELLEVILLE-6 ro-
nice area \$650 a m
plus utilities 1 1/2 m
security Call 759
Ask for Pete

incl heat, hot water &
11-15 ~~\$\$\$~~ incl heat
appl. Avail 11-1 St.
drms Brookdale Kds

ECT CALL
Grutt Realtor

BLOOMFIELD 2
1/2, 2, 3, 4, 5, 6, 7, 8, 9, 10, 11, 12, 13, 14, 15, 16, 17, 18, 19, 20, 21, 22, 23, 24, 25, 26, 27, 28, 29, 30, 31, 32, 33, 34, 35, 36, 37, 38, 39, 40, 41, 42, 43, 44, 45, 46, 47, 48, 49, 50, 51, 52, 53, 54, 55, 56, 57, 58, 59, 60, 61, 62, 63, 64, 65, 66, 67, 68, 69, 70, 71, 72, 73, 74, 75, 76, 77, 78, 79, 80, 81, 82, 83, 84, 85, 86, 87, 88, 89, 90, 91, 92, 93, 94, 95, 96, 97, 98, 99, 100, 101, 102, 103, 104, 105, 106, 107, 108, 109, 110, 111, 112, 113, 114, 115, 116, 117, 118, 119, 120, 121, 122, 123, 124, 125, 126, 127, 128, 129, 130, 131, 132, 133, 134, 135, 136, 137, 138, 139, 140, 141, 142, 143, 144, 145, 146, 147, 148, 149, 150, 151, 152, 153, 154, 155, 156, 157, 158, 159, 160, 161, 162, 163, 164, 165, 166, 167, 168, 169, 170, 171, 172, 173, 174, 175, 176, 177, 178, 179, 180, 181, 182, 183, 184, 185, 186, 187, 188, 189, 190, 191, 192, 193, 194, 195, 196, 197, 198, 199, 200, 201, 202, 203, 204, 205, 206, 207, 208, 209, 210, 211, 212, 213, 214, 215, 216, 217, 218, 219, 220, 221, 222, 223, 224, 225, 226, 227, 228, 229, 230, 231, 232, 233, 234, 235, 236, 237, 238, 239, 240, 241, 242, 243, 244, 245, 246, 247, 248, 249, 250, 251, 252, 253, 254, 255, 256, 257, 258, 259, 260, 261, 262, 263, 264, 265, 266, 267, 268, 269, 270, 271, 272, 273, 274, 275, 276, 277, 278, 279, 280, 281, 282, 283, 284, 285, 286, 287, 288, 289, 290, 291, 292, 293, 294, 295, 296, 297, 298, 299, 300, 301, 302, 303, 304, 305, 306, 307, 308, 309, 310, 311, 312, 313, 314, 315, 316, 317, 318, 319, 320, 321, 322, 323, 324, 325, 326, 327, 328, 329, 330, 331, 332, 333, 334, 335, 336, 337, 338, 339, 340, 341, 342, 343, 344, 345, 346, 347, 348, 349, 350, 351, 352, 353, 354, 355, 356, 357, 358, 359, 360, 361, 362, 363, 364, 365, 366, 367, 368, 369, 370, 371, 372, 373, 374, 375, 376, 377, 378, 379, 380, 381, 382, 383, 384, 385, 386, 387, 388, 389, 390, 391, 392, 393, 394, 395, 396, 397, 398, 399, 400, 401, 402, 403, 404, 405, 406, 407, 408, 409, 410, 411, 412, 413, 414, 415, 416, 417, 418, 419, 420, 421, 422, 423, 424, 425, 426, 427, 428, 429, 430, 431, 432, 433, 434, 435, 436, 437, 438, 439, 440, 441, 442, 443, 444, 445, 446, 447, 448, 449, 450, 451, 452, 453, 454, 455, 456, 457, 458, 459, 460, 461, 462, 463, 464, 465, 466, 467, 468, 469, 470, 471, 472, 473, 474, 475, 476, 477, 478, 479, 480, 481, 482, 483, 484, 485, 486, 487, 488, 489, 490, 491, 492, 493, 494, 495, 496, 497, 498, 499, 500, 501, 502, 503, 504, 505, 506, 507, 508, 509, 510, 511, 512, 513, 514, 515, 516, 517, 518, 519, 520, 521, 522, 523, 524, 525, 526, 527, 528, 529, 530, 531, 532, 533, 534, 535, 536, 537, 538, 539, 540, 541, 542, 543, 544, 545, 546, 547, 548, 549, 550, 551, 552, 553, 554, 555, 556, 557, 558, 559, 560, 561, 562, 563, 564, 565, 566, 567, 568, 569, 570, 571, 572, 573, 574, 575, 576, 577, 578, 579, 580, 581, 582, 583, 584, 585, 586, 587, 588, 589, 590, 591, 592, 593, 594, 595, 596, 597, 598, 599, 600, 601, 602, 603, 604, 605, 606, 607, 608, 609, 610, 611, 612, 613, 614, 615, 616, 617, 618, 619, 620, 621, 622, 623, 624, 625, 626, 627, 628, 629, 630, 631, 632, 633, 634, 635, 636, 637, 638, 639, 640, 641, 642, 643, 644, 645, 646, 647, 648, 649, 650, 651, 652, 653, 654, 655, 656, 657, 658, 659, 660, 661, 662, 663, 664, 665, 666, 667, 668, 669, 670, 671, 672, 673, 674, 675, 676, 677, 678, 679, 680, 681, 682, 683, 684, 685, 686, 687, 688, 689, 690, 691, 692, 693, 694, 695, 696, 697, 698, 699, 700, 701, 702, 703, 704, 705, 706, 707, 708, 709, 710, 711, 712, 713, 714, 715, 716, 717, 718, 719, 720, 721, 722, 723, 724, 725, 726, 727, 728, 729, 730, 731, 732, 733, 734, 735, 736, 737, 738, 739, 740, 741, 742, 743, 744, 745, 746, 747, 748, 749, 750, 751, 752, 753, 754, 755, 756, 757, 758, 759, 760, 761, 762, 763, 764, 765, 766, 767, 768, 769, 770, 771, 772, 773, 774, 775, 776, 777, 778, 779, 780, 781, 782, 783, 784, 785, 786, 787, 788, 789, 790, 791, 792, 793, 794, 795, 796, 797, 798, 799, 800, 801, 802, 803, 804, 805, 806, 807, 808, 809, 810, 811, 812, 813, 814, 815, 816, 817, 818, 819, 820, 821, 822, 823, 824, 825, 826, 827, 828, 829, 830, 831, 832, 833, 834, 835, 836, 837, 838, 839

BLOOMFIELD-5
apartment, new k

43A8

BLOOMFIELD—Ne
do for rent 2 be
available immed
Living room,
room, 2 full b
balcony Washer
dishwasher, refri
4 vertical blin

BLOOMFIELD-BR
new 2 B.R. with b
1, R plus more
12/15 \$1900. plus
Call 485-1453

CLASSIC
meeting the

THE NUTLEY
BELLEVILLE T
BLOOMFIELD

4367 COMMERCIAL
BUSINESS RENTALS4367 COMMERCIAL
BUSINESS RENTALS

APARTMENTS WANTED

ATTENTION LANDLORDS!
We have many qualified tenants that are screened and waiting for apartments or homes. You can choose that special tenant at cost to you. For information call Tony Grande.

MARZULLI REALTORS
284 Belleville Ave. Bloomfield, N.J.
743-2306

BELLEVILLE
Commercial property
400 sq. ft. Ideal for small
machine shop \$150 +
util.

COSTANTINE
REALTY
Realtor 667-7070

4399
HOUSES-UNFURNISH

NUTLEY
3 bedroom colonial
bedroom and street. Van-
ity area. \$550 per
month. 11-15 months
security. Avail. Nov. 15.
REARLTH
RECORDS REALTY
667-5500

Curt Cape Cod
3 bedrooms modern
kitchen, washer, dryer
and refrigerator.
Finished basement. Ex-
cellent area of Union N.J.
1 car garage. Fenced
yard. Call 4PM-2PM
666-6446. Rent \$950.00
month plus 1% inc.
security deposit.

2945 ALARMS

JOHN CLARY'S
LOCK & GLASS
Custom Framing &
Mirror Picture
• Steel Doors & Windows
new & repaired
• Tub & Shower enclosures
• Custom mirrored walls
• Locks installed
repaired, rekeyed
• Road doors installed
• Leaded glass repaired
• Keys made, duplicate
• Sliding glass doors
• Sliding glass doors
• Awnings
BURGALAR ALARMS
24 Hour Alarm
At Interiors of JPK Firms
Bloomfield 748-4274

2949 APPLIANCE REPAIRS

SEWING MACHINE
REPAIRS
ALL MAKES
FREE SERVICE
FREE ESTIMATES
30 YRS EXPERIENCE
991-2990

WE REPAIR
• Washers • Dryers
• Refrigerators
• Air Conditioning
Commercial & Central
E. Crossley & Son
Service 667-9278

LAWN MOWER
REPAIRS

SUNBEAM
Specialists
Parts & Service
Call 748-6819

2955 CARPENTRY

General Carpentry
Decks, basements, roofs
windows, doors, attics
rooms Fully insured
Call Joe
751-9659

2908 CARPET
FURNITURE & DRAPERY
CLEANING

FLYNN'S CARPET
SERVICE
Cleaning, Installations
Repairs
2 rms cleaned \$20.00
3 rms cleaned \$40.00
Call for Estimate
991-4185

FULL
STEAM AHEAD!

Carpet Steam Clean
by hydraulic truckmount
or dry 18 lbs. clean. Fur-
niture safely dry. Colors
America
Carpet Care
252-1366

29011 CLEANING SERVICES

A POLISH TOUCH
HOUSE CLEANING
• We Wash Walls
• Windows
• Carpets • Bathrooms
• Vacuum • Dust
• Polish etc.
FREE ESTIMATE
Call 968-0426

A cleaning service can
change your life & make
things so much easier!
Just try us & you'll see
we'll get you just what
you want.

Call Bell
675-7791

BRITISH STAR
CLEANING SERVICE
Specializing in office and
home cleaning
Owner Operated
Fully Insured and Bonded
Call 667-8770
24 hrs. a day
seven days a week

SNOW'S HONAT FRI
24 hrs. a day
seven days a week

2955 ELECTRICIANS

JOE SERVIDIO
Electrical Contractor
Industrial Commercial
Residential
We Do It All
N.J. Lic. No. 8317
Bonded & Insured

DE LIZZO ELECTRICAL

Contracting Inc.
Industrial Commercial
Residential
No job too small. Free
estimates. Call 661-2937
License No. 4801

4387 RESIDENTIAL
RENTALS WANTED

We Screen All
Prospective Tenants
No Fee To Landlord
CONSTANTINE REALTY
284 Franklin Ave.
Nutley, N.J. 07110
Realtor 667-7070

2 B.R. apt. for rent for a
senior citizen &
daughter. Needed 12/1
Reasonable 667-5989

43V5 VACATION RENTALS

POCONO HOUSE
RENTAL
Attention: Skiers
hikers. 3 B.R. home all
utis. Free rental of 40 lifts
with rental. Call 838-8728
Gene

2965 GUTTERS

GUTTERS
AND LEADERS
CLEANED, REPAIRED
OR REPLACED WITH
SEAMLESS WHITE OR
BROWN ALUMINUM
AL. H. ROOFING, INC.
& SIDING REPAIRS
CALL AL ROBERTS
751-5467
ANYTIME, EVES
& WEEKENDS OR
FULLY-INSURED FREE EST.

2965 HANDYMAN

HANDYMAN
30% off for senior citizens
NORTH HOME SERVICE
No job too small. Call
Bob 667-3690. 35 years of
service

2907 DRIVEWAYS

HANDYMAN SAL
PAINTING
CLEAN GUTTERS
SEAL DRIVEWAYS
NO JOB TOO SMALL
CALL ANYTIME
759-1467

2965 HANDYMAN

HANDYMAN
IF YOU HAVE A
ROOFING
GUTTERS CLEANED
WIND CORRS.
PAINTING ETC.
FREE ESTIMATES
CALL JOE
759-0724

2967 HOME IMPROVEMENT

D & F
GENERAL
CONTRACTORS
Custom Remodeling
Additions • Repairs
• Carpentry
• Sheet Rock & Tile
• Bathrooms
• Basements • Etc.
• Fully Insured
Essex County Grants
751-4882
BELLEVILLE

2965 ELECTRICIANS

VALERIA
ELECTRIC
• Commercial
• Residential
• 24 Hour Emergency
Service Lic. No. 7060
Call 279-4070

2965 ELECTRICIANS

MICHAEL
BARILETTANO
ELECTRIC
CONTRACTOR
• Reasonable Rates
• Residential & Commercial
• Insured & Bonded
• Free Estimates
• 24 Hour Service
Call 667-4773

2965 ELECTRICIANS

LA BRUZZA
SPIZZA
General Contractors
Interiors, exteriors,
bathrooms, baths
skylights, decks No job
too small
Call SHW 309-2228
758-3800

2965 MEDICAL
REIMBURSEMENT

RECENTLY HOSPITALIZED OR ARE YOU
RECEIVING CONFUSING MEDICAL BILLS?
Is your head spinning? Does Medicare say "Blue
Shield" Does Major Med? Must I pay the physi-
cian directly? How do I get reimbursed? Let me
assist you with the correct in-
surance forms. Completing them for you and saving
you a great deal of money.
Call Patricia at 748-8558 evenings

2965 PAINTING

LHOIN BO AYO
6105-892
All types of painting
Interior Exterior
Expert in Preparation
Insurance Estimates
• Free Estimates •
• Licensed •
• Bonded •

2965 PAINTING

BRITISH STAR
CLEANING SERVICE
Specializing in office and
home cleaning
Owner Operated
Fully Insured and Bonded
Call 667-8770
24 hrs. a day
seven days a week

2965 PAINTING

BRITISH STAR
CLEANING SERVICE
Specializing in office and
home cleaning
Owner Operated
Fully Insured and Bonded
Call 667-8770
24 hrs. a day
seven days a week

2965 PAINTING

BRITISH STAR
CLEANING SERVICE
Specializing in office and
home cleaning
Owner Operated
Fully Insured and Bonded
Call 667-8770
24 hrs. a day
seven days a week

J. DOMENICK & SONS
CONSTRUCTION CO.

331-8286
Carpentry
Interior & Exterior
Masonry Work & Block
Siding
Replacement Windows

ROOFING
GUTTERS

• Slope Terminals
• Free Estimates
• Free Estimates
Call Bob
751-4155

J. COPPOLA
& SONS INC.

Est. 1942. 13 Years Experience
Specializing in
Insulated Aluminum
& Vinyl Siding
Call 429-9266
424-1133-INSURED

NIGHTWATCH

The musical difference
Prime times still available
7:00 to 10:00 PM
To hear hand live or
view video
Call 546-3315

TONY NICOSIA
& SONS

Complete Home Renovation
NEW ADDITIONS!
1. Full. 2. 2. Full. Corner
Specialists in
CUSTOM STUCK
KITCHENS
• Replacement Windows
• 751-7171 or 759-2974

JIM LUONGO & SON
CONSTRUCTION

• Alarm Siding
• New Bathrooms
• Modern Kitchens
• Slatelike Terraces
• Remodeling
Free Estimates
661-2216

2965 MASONRY

MASONRY
SPECIALISTS
LAFFERIERE & SONS
Over 2 generations
of Exp.
• Sidewalks
• Bricks • Siding
• Retaining Walls
• Patios
• Modern Kitchens
• Slatelike Terraces
• Remodeling
Free Estimates
661-2216

2965 MASONRY

MARIO RIZZI & CO.
ASPHALT & CONCRETE
• DRIVEWAYS • Sidewalks
• Patios • Patch-ups
• Belgians • Blocks
• Concrete curbs • railroad
ties • sod & top soil work
Call 751-8888 after 5 p.m.

2965 MASONRY

MARIO RIZZI & CO.
ASPHALT & CONCRETE
• DRIVEWAYS • Sidewalks
• Patios • Patch-ups
• Belgians • Blocks
• Concrete curbs • railroad
ties • sod & top soil work
Call 751-8888 after 5 p.m.

2965 MASONRY

MARIO RIZZI & CO.
ASPHALT & CONCRETE
• DRIVEWAYS • Sidewalks
• Patios • Patch-ups
• Belgians • Blocks
• Concrete curbs • railroad
ties • sod & top soil work
Call 751-8888 after 5 p.m.

2965 MASONRY

MARIO RIZZI & CO.
ASPHALT & CONCRETE
• DRIVEWAYS • Sidewalks
• Patios • Patch-ups
• Belgians • Blocks
• Concrete curbs • railroad
ties • sod & top soil work
Call 751-8888 after 5 p.m.

2965 MASONRY

MARIO RIZZI & CO.
ASPHALT & CONCRETE
• DRIVEWAYS • Sidewalks
• Patios • Patch-ups
• Belgians • Blocks
• Concrete curbs • railroad
ties • sod & top soil work
Call 751-8888 after 5 p.m.

2965 MASONRY

MARIO RIZZI & CO.
ASPHALT & CONCRETE
• DRIVEWAYS • Sidewalks
• Patios • Patch-ups
• Belgians • Blocks
• Concrete curbs • railroad
ties • sod & top soil work
Call 751-8888 after 5 p.m.

2965 MASONRY

MARIO RIZZI & CO.
ASPHALT & CONCRETE
• DRIVEWAYS • Sidewalks
• Patios • Patch-ups
• Belgians • Blocks
• Concrete curbs • railroad
ties • sod & top soil work
Call 751-8888 after 5 p.m.

2965 MASONRY

MARIO RIZZI & CO.
ASPHALT & CONCRETE
• DRIVEWAYS • Sidewalks
• Patios • Patch-ups
• Belgians • Blocks
• Concrete curbs • railroad
ties • sod & top soil work
Call 751-8888 after 5 p.m.

2965 MASONRY

MARIO RIZZI & CO.
ASPHALT & CONCRETE
• DRIVEWAYS • Sidewalks
• Patios • Patch-ups
• Belgians • Blocks
• Concrete curbs • railroad
ties • sod & top soil work
Call 751-8888 after 5 p.m.

2965 MASONRY

MARIO RIZZI & CO.
ASPHALT & CONCRETE
• DRIVEWAYS • Sidewalks
• Patios • Patch-ups
• Belgians • Blocks
• Concrete curbs • railroad
ties • sod & top soil work
Call 751-8888 after 5 p.m.

2965 MASONRY

MARIO RIZZI & CO.
ASPHALT & CONCRETE
• DRIVEWAYS • Sidewalks
• Patios • Patch-ups
• Belgians • Blocks
• Concrete curbs • railroad
ties • sod & top soil work
Call 751-8888 after 5 p.m.

2919 LIMO SERVICE

VIGILANTE
LIMOUSINE SERVICE
LET US DRIVE YOU
THROUGH OUR LATE
MODEL STRETCH
LIMOUSINE
661-3440

STARLITE
LIMOUSINE SERVICE

Specializing in
• Corporate Accounts
• Atlantic City
• Weddings
• Airports • Proms
• All Occasions
• 10% discount w/ call
450-0075 • 1171 Belleville

2910 LOCK & GLASS

BEN'S LOCK & GLASS
• NUTLEY
• Free Estimates
• Furniture Tops
• Plate & Safety glass
replacement
• Commercial door &
closer repairs and in-
stallations
• Replacement windows
• Storm windows & doors
• Mirrored walls
• Tub & shower
enclosures

2910 LOCK & GLASS

BEN'S LOCK & GLASS
• NUTLEY
• Free Estimates
• Furniture Tops
• Plate & Safety glass
replacement
• Commercial door &
closer repairs and in-
stallations
• Replacement windows
• Storm windows & doors
• Mirrored walls
• Tub & shower
enclosures

2910 LOCK & GLASS

BEN'S LOCK & GLASS
• NUTLEY
• Free Estimates
• Furniture Tops
• Plate & Safety glass
replacement
• Commercial door &
closer repairs and in-
stallations
• Replacement windows
• Storm windows & doors
• Mirrored walls
• Tub & shower
enclosures

2910 LOCK & GLASS

BEN'S LOCK & GLASS
• NUTLEY
• Free Estimates
• Furniture Tops
• Plate & Safety glass
replacement
• Commercial door &
closer repairs and in-
stallations
• Replacement windows
• Storm windows & doors
• Mirrored walls
• Tub & shower
enclosures

2910 LOCK & GLASS

BEN'S LOCK & GLASS
• NUTLEY
• Free Estimates
• Furniture Tops
• Plate & Safety glass
replacement
• Commercial door &
closer repairs and in-
stallations
• Replacement windows
• Storm windows & doors
• Mirrored walls
• Tub & shower
enclosures

2910 LOCK & GLASS

BEN'S LOCK & GLASS
• NUTLEY
• Free Estimates
• Furniture Tops
• Plate & Safety glass
replacement
• Commercial door &
closer repairs and in-
stallations
• Replacement windows
• Storm windows & doors
• Mirrored walls
• Tub & shower
enclosures

2910 LOCK & GLASS

BEN'S LOCK & GLASS
• NUTLEY
• Free Estimates
• Furniture Tops
• Plate & Safety glass
replacement
• Commercial door &
closer repairs and in-
stallations
• Replacement windows
• Storm windows & doors
• Mirrored walls
• Tub & shower
enclosures

2910 LOCK & GLASS

BEN'S LOCK & GLASS
• NUTLEY
• Free Estimates
• Furniture Tops
• Plate & Safety glass
replacement
• Commercial door &
closer repairs and in-
stallations
• Replacement windows
• Storm windows & doors
• Mirrored walls
• Tub & shower
enclosures

2910 LOCK & GLASS

BEN'S LOCK & GLASS
• NUTLEY
• Free Estimates
• Furniture Tops
• Plate & Safety glass
replacement
• Commercial door &
closer repairs and in-
stallations
• Replacement windows
• Storm windows & doors
• Mirrored walls
• Tub & shower
enclosures

2910 LOCK & GLASS

BEN'S LOCK & GLASS
• NUTLEY
• Free Estimates
• Furniture Tops
• Plate & Safety glass
replacement
• Commercial door &
closer repairs and in-
stallations
• Replacement windows
• Storm windows & doors
• Mirrored walls
• Tub & shower
enclosures

2910 LOCK & GLASS

BEN'S LOCK & GLASS
• NUTLEY
• Free Estimates
• Furniture Tops
• Plate & Safety glass
replacement
• Commercial door &
closer repairs and in-
stallations
• Replacement windows
• Storm windows & doors
• Mirrored walls
• Tub & shower
enclosures

2910 LOCK & GLASS

BEN'S LOCK & GLASS
• NUTLEY
• Free Estimates
• Furniture Tops
• Plate & Safety glass
replacement
• Commercial door &
closer repairs and in-
stallations
• Replacement windows
• Storm windows & doors
• Mirrored walls
• Tub & shower
enclosures

2910 LOCK & GLASS

BEN'S LOCK & GLASS
• NUTLEY
• Free Estimates
• Furniture Tops
• Plate & Safety glass
replacement
• Commercial door &
closer repairs and in-
stallations
• Replacement windows
• Storm windows & doors
• Mirrored walls
• Tub & shower
enclosures

2910 LOCK & GLASS

BEN'S LOCK & GLASS
• NUTLEY
• Free Estimates
• Furniture Tops
• Plate & Safety glass
replacement
• Commercial door &
closer repairs and in-
stallations
• Replacement windows
• Storm windows & doors
• Mirrored walls
• Tub & shower
enclosures

2910 LOCK & GLASS

BEN'S LOCK & GLASS
• NUTLEY
• Free Estimates
• Furniture Tops
• Plate & Safety glass
replacement
• Commercial door &
closer repairs and in-
stallations
• Replacement windows
• Storm windows & doors
• Mirrored walls
• Tub & shower
enclosures

2910 LOCK & GLASS

BEN'S LOCK & GLASS
• NUTLEY
• Free Estimates
• Furniture Tops
• Plate & Safety glass
replacement
• Commercial door &
closer repairs and in-
stallations
• Replacement windows
• Storm windows & doors
• Mirrored walls
• Tub & shower
enclosures

2910 LOCK & GLASS

BEN'S LOCK & GLASS
• NUTLEY
• Free Estimates
• Furniture Tops
• Plate & Safety glass
replacement
• Commercial door &
closer repairs and in-
stallations
• Replacement windows
• Storm windows & doors
• Mirrored walls
• Tub & shower
enclosures

KILKENNY
MOVING VAN

ALL TRUCKS LICENSED IN N.J.
• LOCAL & STATE LICENSE
• FULLY INSURED
FAMILY OWNED & OPERATED
SINCE 1960
751-2020
SIX COUNTRIES, NEWARK, N.J.

2999 PIANO SERVICE

EXPERT TUNING
REPAIRS
REBUILDING
REFINISHING
GIGLIO 783-5818

29P10 PLUMBING

WINDHEIM
Plumbing-Heating
418 Franklin Ave.
Nutley
• Gas Heat • Hot Water
Heaters • Disposals
• Leak Repairs
• Modernizing
Bathrooms • Kitchens
667-6888

29P2 RECREATION

SUN GLO CORP.
• ITALIAN
• BOXE • BALLS
• BILLIARDS
• RECREATIONAL
SHUFFLEBOARDS &
ACCESSORIES
• JEWELRY & IMPORT/EXPORT
• GENUINE
• BELGIAN BALLS
111 Herkett St. Belleville
759-4474

29P5 PAINTING

FRANK RUMEO
Painting-Decorating
Paperhanging • Int. &
Ext.
Free Estimates
No job too small
Fully Insured
998-7046
European Craftsman

29P5 PAINTING

FRANK RUMEO
Painting-Decorating
Paperhanging • Int. &
Ext.
Free Estimates
No job too small
Fully Insured
998-7046
European Craftsman

29P5 PAINTING

FRANK RUMEO
Painting-Decorating
Paperhanging • Int. &
Ext.
Free Estimates
No job too small
Fully Insured
998-7046
European Craftsman

29P5 PAINTING

FRANK RUMEO
Painting-Decorating
Paperhanging • Int. &
Ext.
Free Estimates
No job too small
Fully Insured
998-7046
European Craftsman

29P5 PAINTING

FRANK RUMEO
Painting-Decorating
Paperhanging • Int. &
Ext.
Free Estimates
No job too small
Fully Insured
998-7046
European Craftsman

29P5 PAINTING

FRANK RUMEO
Painting-Decorating
Paperhanging • Int. &
Ext.
Free Estimates
No job too small
Fully Insured
998-7046
European Craftsman

29P5 PAINTING

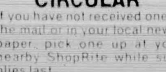
FRANK RUMEO
Painting-Decorating
Paperhanging • Int. &
Ext.
Free Estimates
No job too small
Fully Insured
998-7046
European Craftsman

29P5 PAINTING

FRANK RUMEO
Paint



- Knitstreet Gloves and Mittens



SAVE 30

In order to assure a sufficient supply of sales items for all our customers, we must reserve the right to limit the purchase to units of 4 of any sales items, except where otherwise noted. Not responsible for typographical errors. Prices effective Sun., Nov. 2 thru Sat., Nov. 8, 1986. None sold to other retailers or wholesalers. Artwork does not necessarily represent item on sale. It is for display purposes only. Sunday sales subject to local blue laws. Copyright WAKEFERN FOOD CORPORATION 1986.